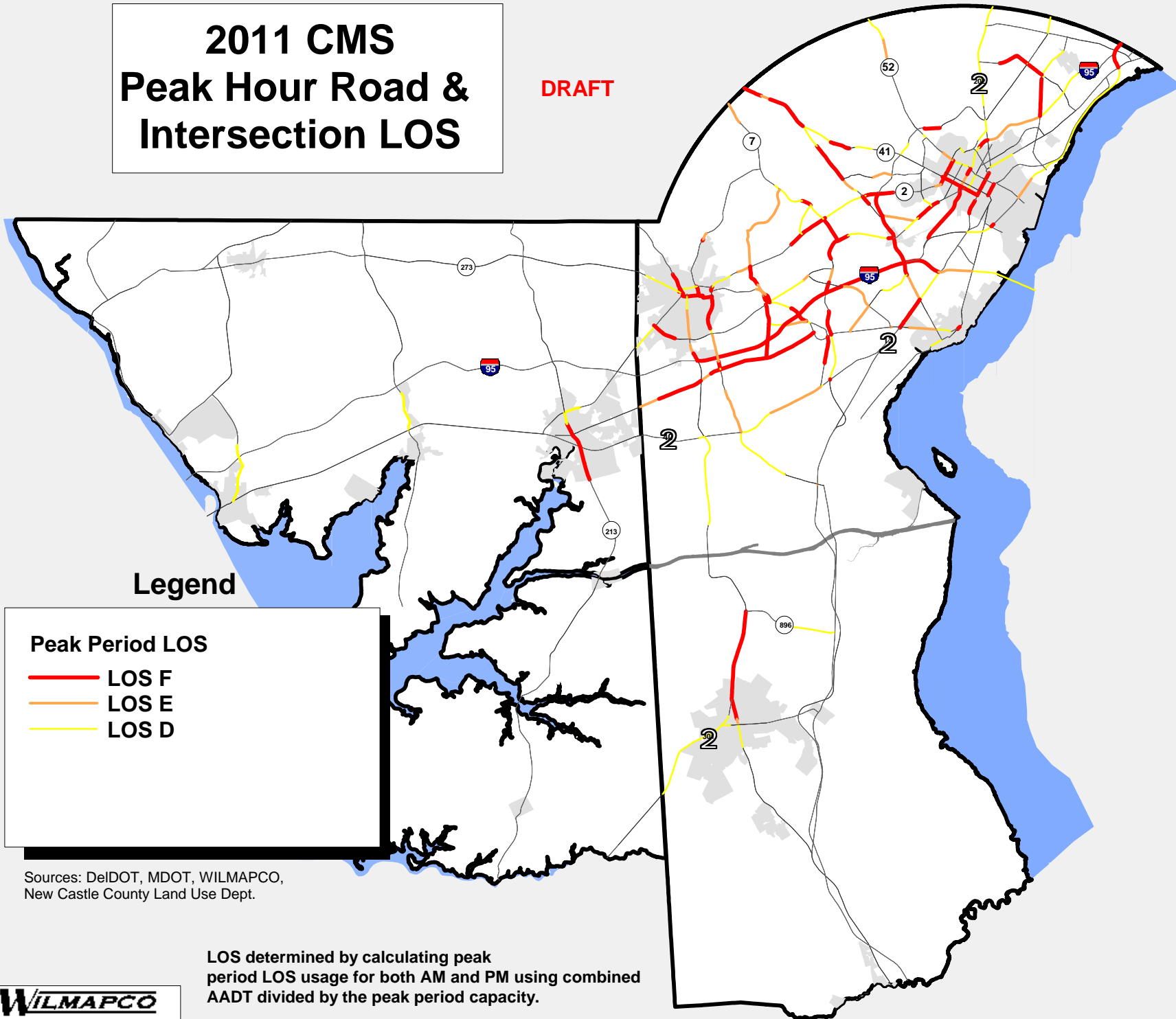


2011 CMS Peak Hour Road & Intersection LOS

DRAFT



Legend

Peak Period LOS

- LOS F
- LOS E
- LOS D

Sources: DelDOT, MDOT, WILMAPCO,
New Castle County Land Use Dept.

LOS determined by calculating peak
period LOS usage for both AM and PM using combined
AADT divided by the peak period capacity.