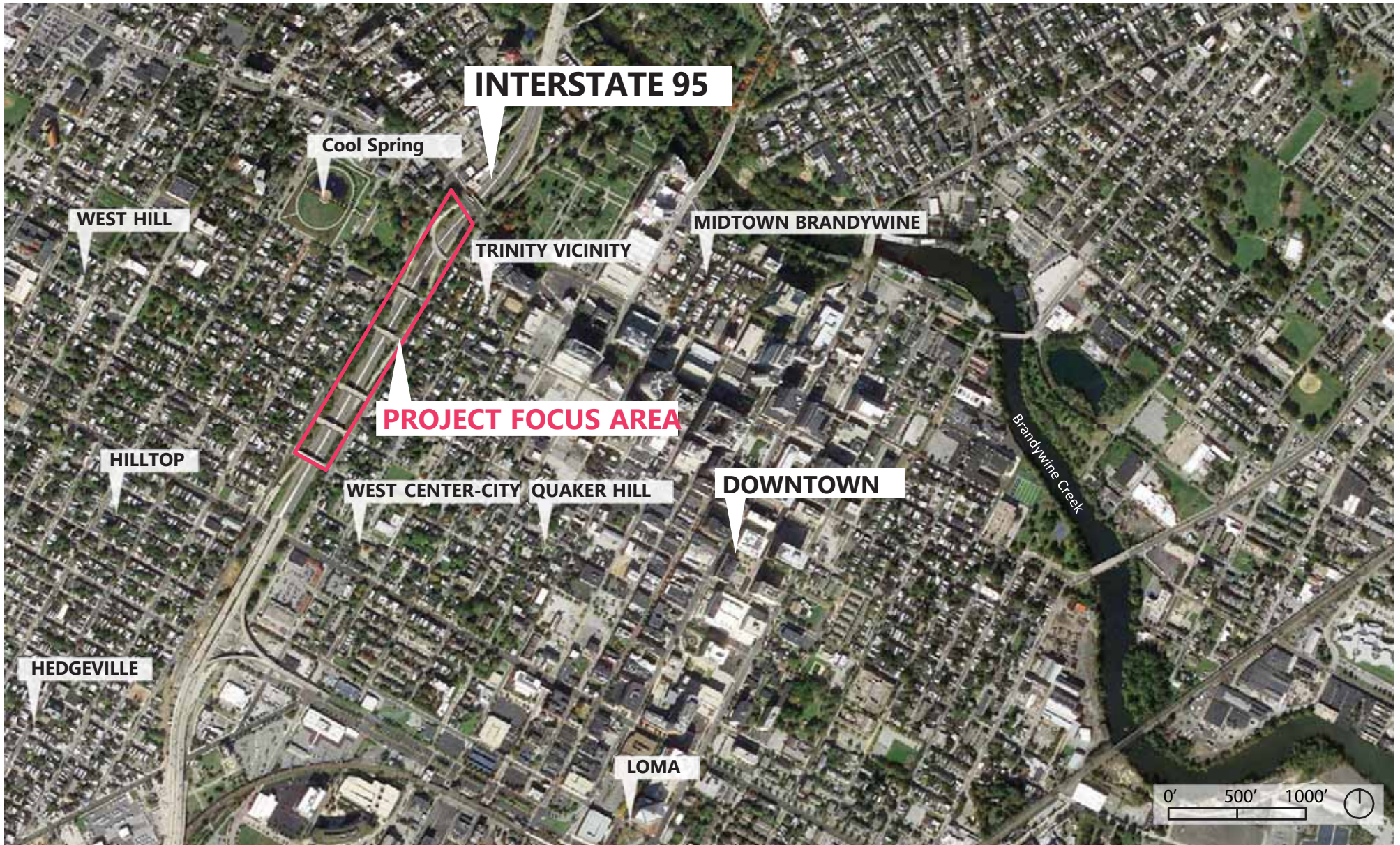


An aerial photograph of a city, likely Wilmer, Maryland, showing a dense grid of streets, residential areas, and a river. A major highway interchange is visible in the lower left. A dark purple rectangular overlay is positioned on the right side of the image, containing white text.

BRIDGING I-95: CONNECTING THE COMMUNITY

CAP FEASIBILITY STUDY
WILMAPCO PAC
17 October 2022

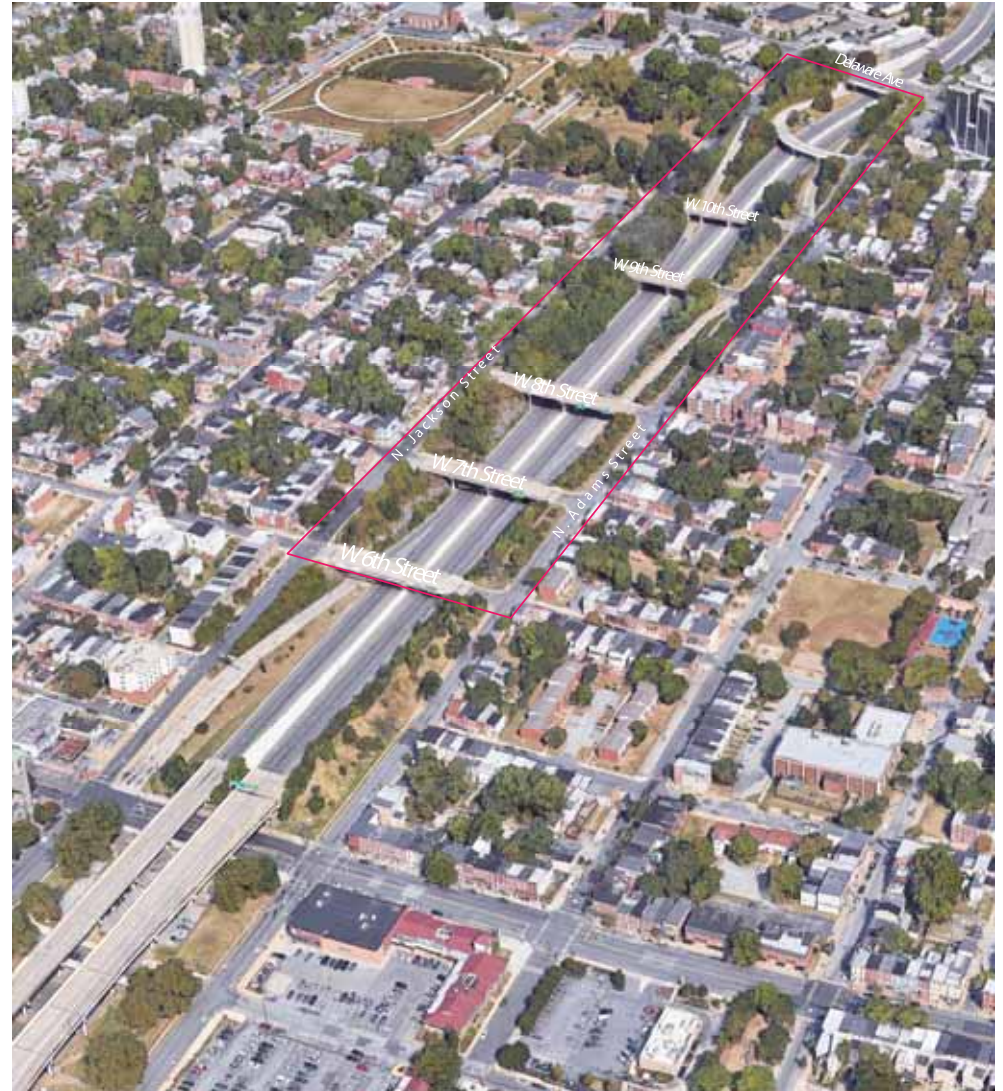


ADVISORY COMMITTEE

- U.S. Senator Thomas Carper
- U.S. Senator Chris Coons
- U.S. Representative Lisa Blunt Rochester
- FHWA
- State Senators: Sarah McBride, Elizabeth Lockman, Darius Brown
- State Representatives: Nnamdi Chukwuocha, Charles "Bud" Freel, Sherry Dorsey Walker
- Delaware Transit Corporation (DTC)
- New Castle County
- City Council members: Michelle Harlee 4th, Bregetta Fields 5th, Nathan Field 8th
- Neighborhood Planning Council: 4th, 5th, 8th
- Downtown Visions
- United Neighbors
- Westside Grows Together
- Latin American Community Center
- BlindSight Delaware
- Bike Delaware
- West Center City Neighborhood Associations
- Westside Neighborhood Coalition
- Cool Spring/Tilton Park Neighborhood Coalition
- Trinity Vicinity Neighborhood Association
- Trinity Episcopal Church
- Hilltop Lutheran Church

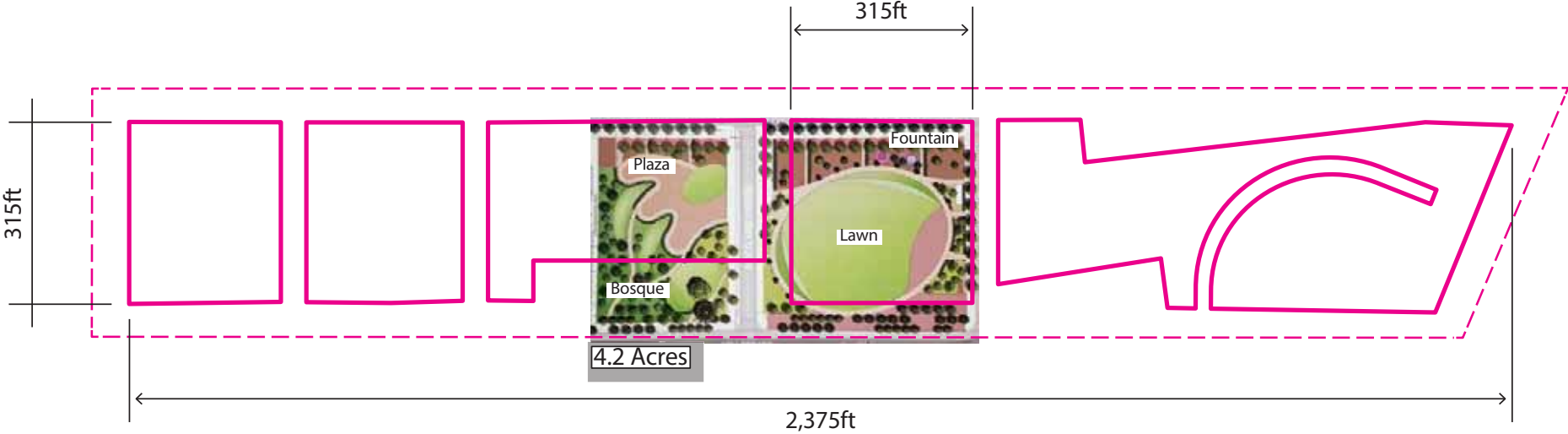
PROJECT TEAM

WILMAPCO DeIDOT/DTC
City of Wilmington Administration





SCALE COMPARISONS | The Commons, Minneapolis, MN



Phase 01 Program Feedback (November 2021-January 2022)

Trees



Pedestrian-only zones



Shade



Small group gathering



Multi-function landscape



Embedded



Community gardens



Pollinator gardens



Traffic calming



Performance venue



Cafe/moveable seating



Flexible lawn



Protected bike lane



Accessibility improvements



Playground



THREE INITIAL IDEAS

Early Approach 1: Outdoor Rooms *a series of distinct places*

- All Streets Remain Open
- Includes Development Site
- Closes 10th St. Ramp



Early Approach 2: Greenway ★ *a contiguous public green*

- 8th and 9th Close to Cars
- Excludes 6th-7th Street Span



Early Approach 03: The Commons *a cohesive civic space*

- All Streets Remain Open
- All Approaches are Phaseable

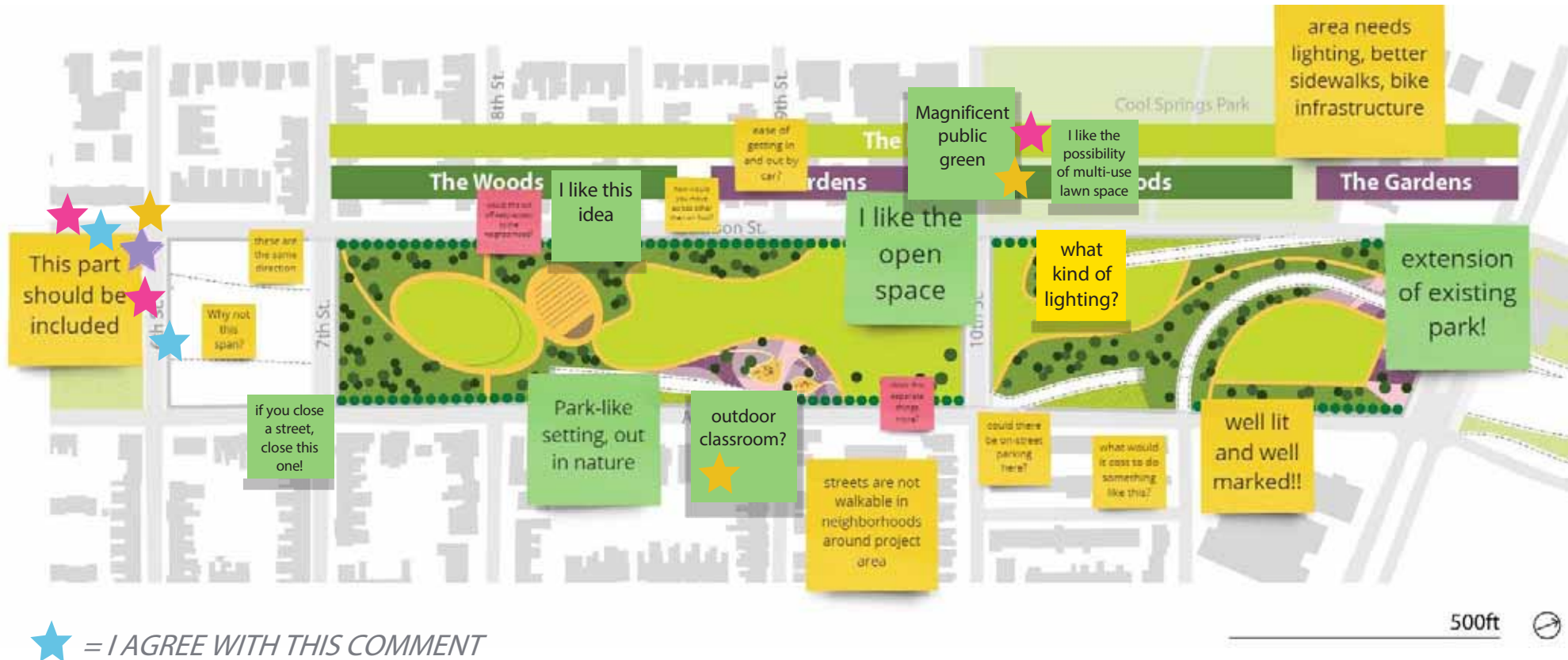


Community Workshop #2 April



COMMUNITY AND ADVISORY COMMITTEE FEEDBACK

Early Approach 2: Greenway *a contiguous public green*

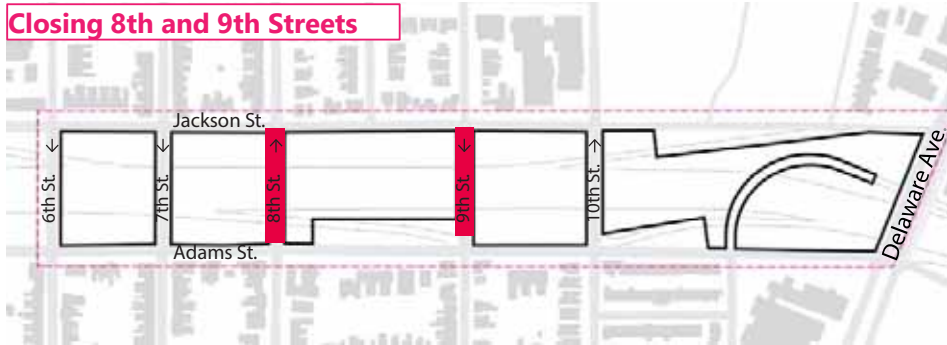


I-95 FEASIBILITY STUDY

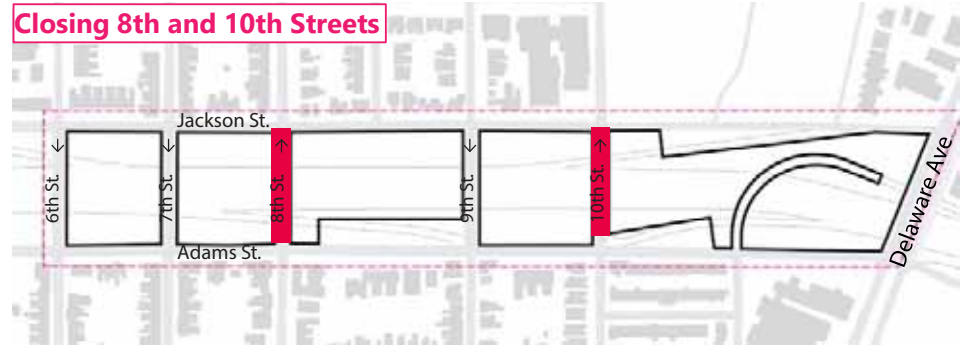
Traffic Analysis Outcomes

April 2022 Understanding Traffic Conditions

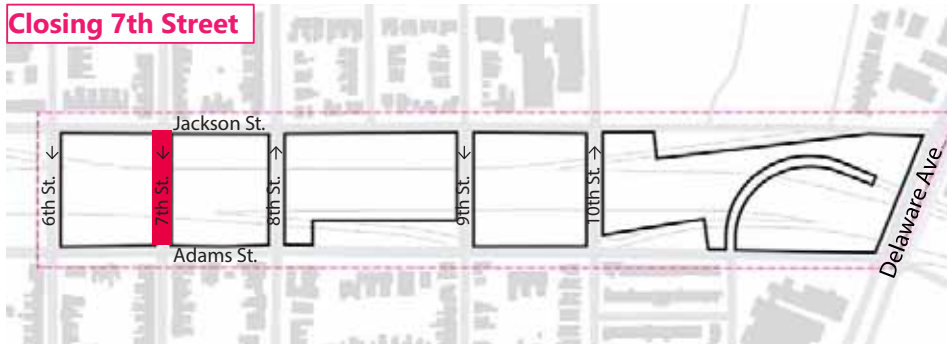
Closing 8th and 9th Streets



Closing 8th and 10th Streets



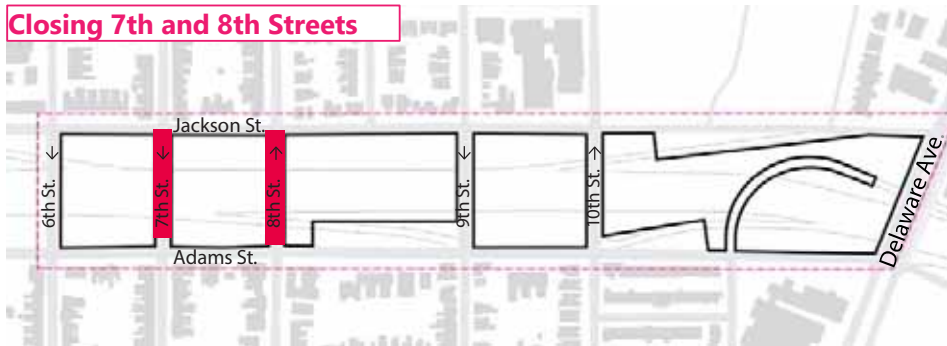
Closing 7th Street



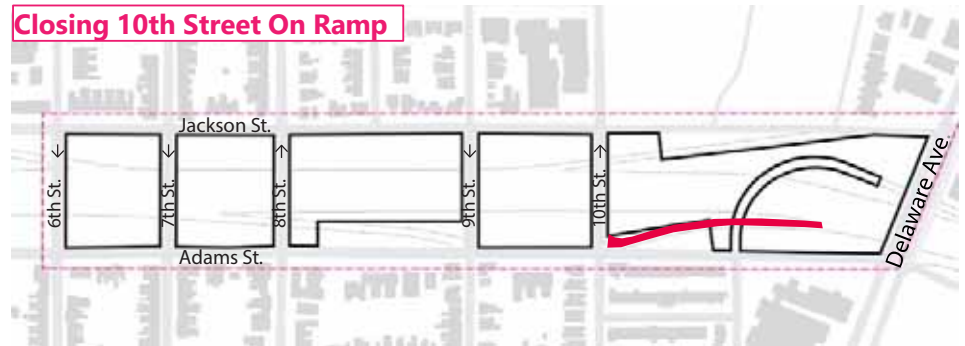
Closing 9th and 10th Streets



Closing 7th and 8th Streets

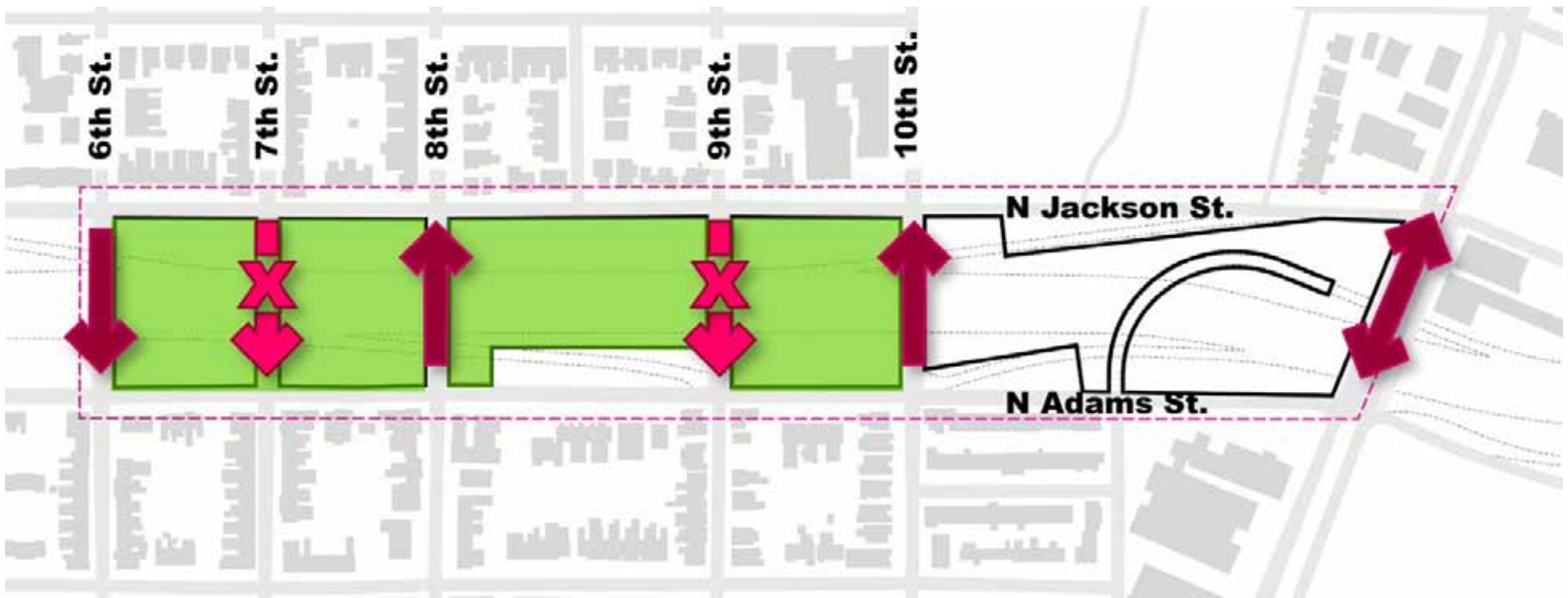


Closing 10th Street On Ramp



September 2022 Traffic Analysis: Street Closure Feasibility

Traffic analysis found that minor signal timing modifications would mitigate any impact to level of service if **any two streets were closed**.

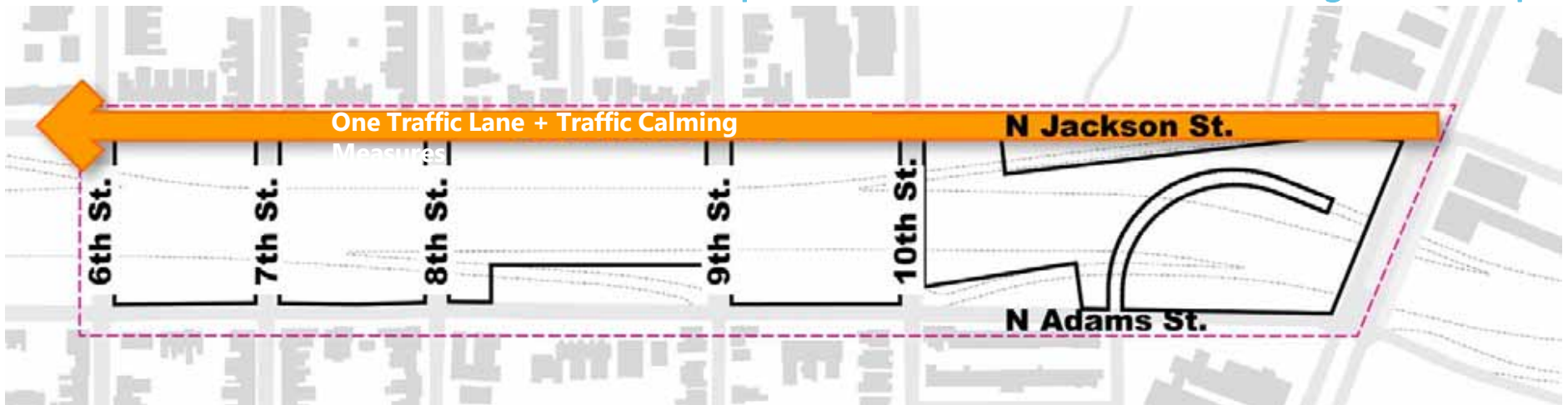


Closing 7th and 9th streets creates two larger spans, between 6th and 8th streets and 8th and 10th streets.

September 2022 Traffic Analysis: Street Closure Feasibility

Traffic analysis found that there would be minimal impact to level of service if *N. Jackson Street were reduced to one drive lane*. Reducing N Jackson to *one lane* and *adding traffic calming measures* slows south-bound traffic near Cool Spring Park, William Lewis Elementary, adjacent residences, and the proposed cap.

Adams Street will have a similar analysis completed before the next AC Meeting/Workshop.



An aerial photograph of a city, likely Philadelphia, showing a dense urban landscape with numerous buildings, streets, and green spaces. A green polygon is drawn over a central area, highlighting a specific site or corridor. The text "I-95 FEASIBILITY STUDY" is overlaid in large, bold, white capital letters, and "Design Concepts" is overlaid in a smaller, white, italicized font below it.

I-95 FEASIBILITY STUDY

Design Concepts

CONCEPT A

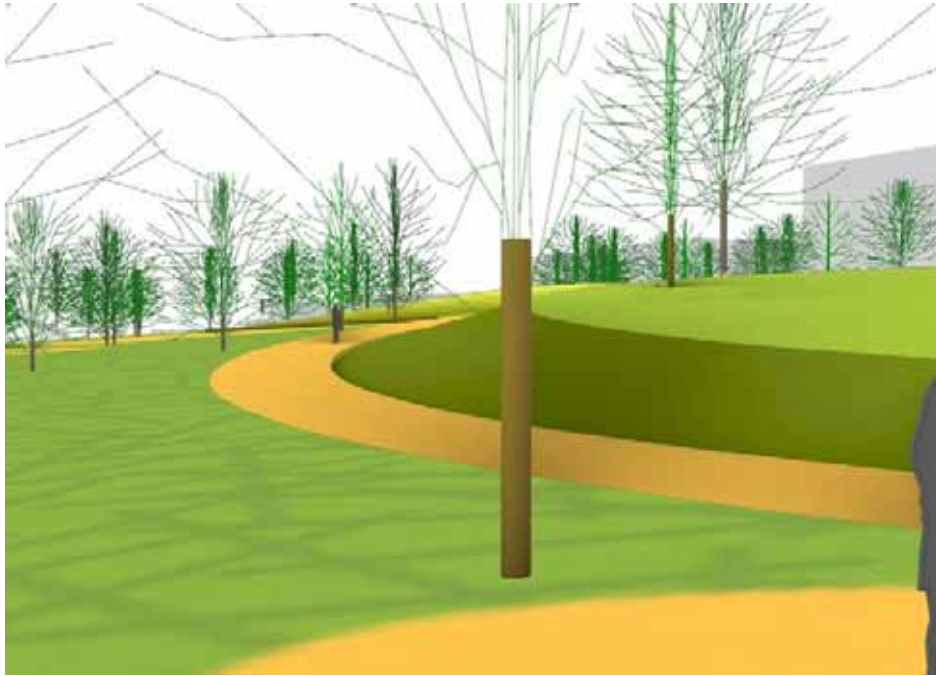
- + Includes a possible community amenity site by Delaware Ave
- + Closes 7th and 9th Street bridges



CONCEPT A



CONCEPT A



View 01: Shaded Park Setting Looking South



View 02: Public Green, Play, and Gardens looking North

CONCEPT B

- + No development site
- + Closes 7th and 9th Street bridges



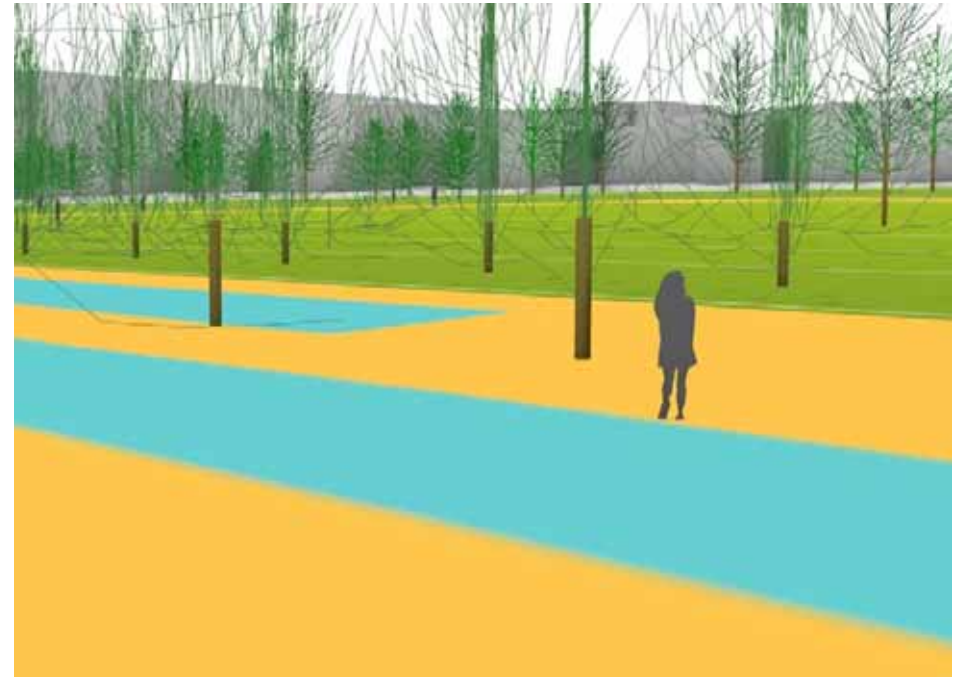
CONCEPT B



CONCEPT B



View 01: Public Green Between 6th and 8th



View 02: Plaza + Water Feature looking Toward Jackson

CONCEPT B1

- + Includes a smaller development site by Delaware Ave
- + Closes 7th and 9th Street bridges



CONCEPT B1



CONCEPT B1



View 01: Public Green Between 6th and 8th



View 02: Plaza on Jackson Looking North

CONCEPT A



CONCEPT B



CONCEPT B1



NEXT STEPS

- Synthesize Preferred Concept
- Refine Preferred Concept
- Assess Traffic Engineering Feasibility
- Present Final Concept to the Community (Date TBD)



TASK 1

COMMUNITY VISIONING

TASK 2

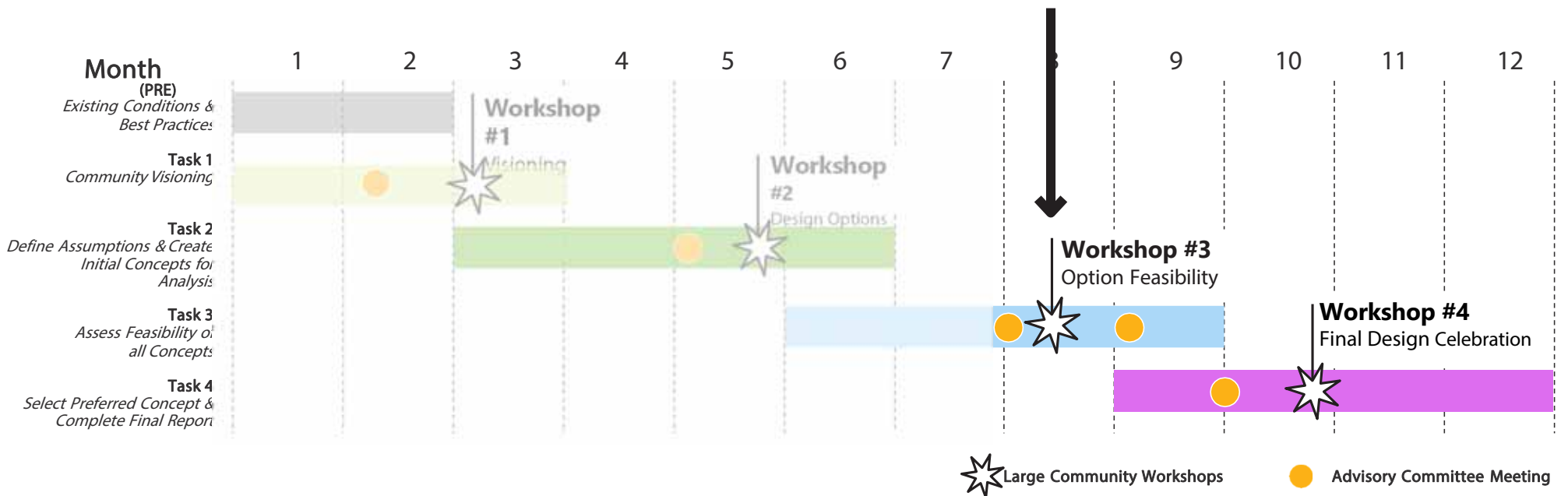
DEFINE ASSUMPTIONS AND
CREATE INITIAL CONCEPTS FOR
ANALYSIS

TASK 3

ASSESS FEASIBILITY OF ALL
CONCEPTS

TASK 4

SELECT PREFERRED CONCEPT
& COMPLETE FINAL REPORT



Learn more about this work to date:

<http://www.wilmapco.org/i95cap/>

Questions or Comments? Please contact Dave Gula dgula@wilmapco.org

