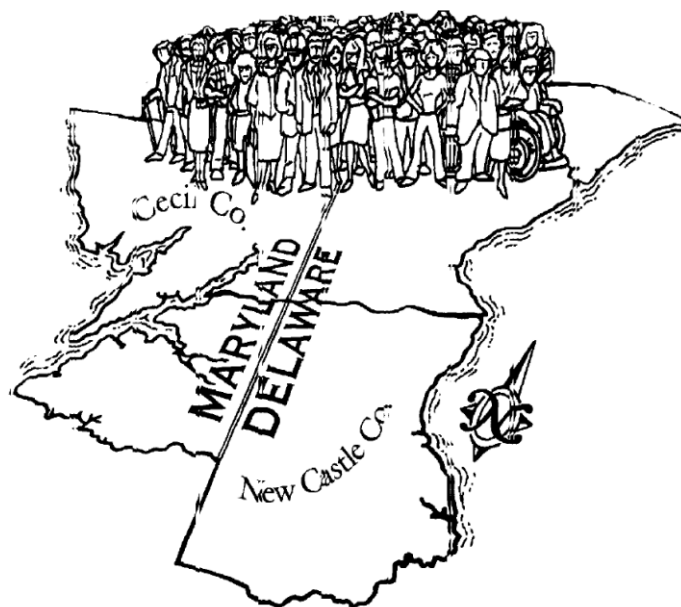


**U**NIFIED  
**P**LANNING  
**W**ORK  
**P**ROGRAM



for the  
Wilmington  
Metropolitan  
Area

**Fiscal Year 2025**

July 1, 2024 - June 30, 2025



Partners with you in transportation planning

**FY 2025  
Unified Planning Work Program**

**FISCAL YEAR 2025  
July 1, 2025– June 30, 2025**

**UNIFIED PLANNING WORK PROGRAM**

**For the**

**WILMINGTON METROPOLITAN AREA**

Prepared by the staff of the  
Wilmington Area Planning Council

The preparation of this document was financed in part with funds provided by the Federal Government, including the Federal Transit Administration and the Federal Highway Administration of the United States Department of Transportation.

**FY 2025  
Unified Planning Work Program**

**FY 2025  
Unified Planning Work Program**

Wilmington Area Planning Council Unified Planning Work Program - FY 2025

---

TABLE OF CONTENTS

	PAGE
I - INTRODUCTION .....	I-1
II – ORGANIZATION.....	II-1
WILMAPCO COUNCIL .....	II-1
TECHNICAL ADVISORY COMMITTEE (TAC) .....	II-1
PUBLIC ADVISORY COMMITTEE (PAC).....	II-2
WILMAPCO STAFF .....	II-3
III - FY 2025 UPWP FINANCIAL INFORMATION .....	III-1
FY 2025 UPWP FUNDING ANALYSIS .....	III-1
FY 2025 UPWP FUNDING OUTLINE .....	III-2
FY 2025 UPWP CONSULTANT COSTS .....	III-3
IV - FY 2025 WORK TASKS - WILMAPCO .....	IV-1
MPO 25.01 - ADMINISTRATION .....	IV-1
MPO 25.02 - UNIFIED PLANNING WORK PROGRAM (UPWP).....	IV-3
MPO 25.03 - PUBLIC OUTREACH AND PUBLIC EDUCATION .....	IV-5
MPO 25.04 – DATA COLLECTION, MANAGEMENT AND DISTRIBUTION .....	IV-9
MPO 25.05 – REGIONAL PLANNING AND TECHNICAL ANALYSIS .....	IV-13
MPO 25.06 – AIR QUALITY ANALYSIS AND COORDINATION .....	IV-15
MPO 25.07 – NEW FEDERAL REGULATION COMPLIANCE .....	IV-17
MPO 25.08 – GOODS MOVEMENT PLAN IMPLEMENTATION .....	IV-19
MPO 25.09 – REGIONAL COORDINATION.....	IV-20
MPO 25.10 – REGIONAL TRANSPORTATION PLAN (RTP) IMPLEMENTATION .....	IV-22
MPO 25.11 – SUB-REGIONAL STUDIES AND COORDINATION .....	IV-25
MPO 25.12 – TRANSPORTATION IMPROVEMENT PROGRAM (TIP).....	IV-29
MPO 25.13 – MONITORING OF SUB-REGIONAL STUDIES .....	IV-31
V - PRIOR YEARS' WORK TASKS CARRIED OVER .....	V-1
VI - FY 2025 UPWP COST ALLOCATION BY FUNDING SOURCE CHART .....	VI-1
VII – COUNCIL RESOLUTIONS .....	VII-1

## I INTRODUCTION

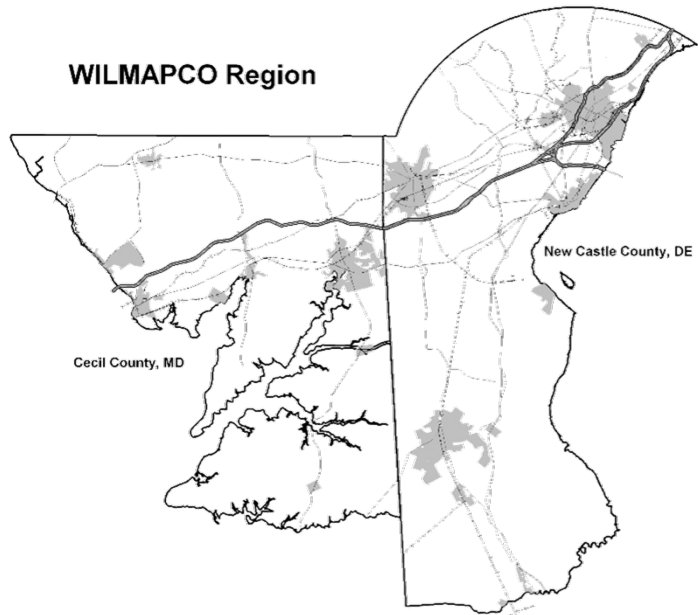
The Unified Planning Work Program (UPWP) is a document that includes all planning activities to be performed with funds provided under Title 24, U.S.C. and the Federal Transit Act. The Fixing America's Surface Transportation Act (FAST Act) requires that metropolitan planning organizations (MPOs), such as the Wilmington Area Planning Council (WILMAPCO), in areas with over 200,000 populations develop a UPWP in cooperation with the State and operators of publicly owned transit. Other sources of federal funds used for planning activities in the region should also be included in the UPWP.

The UPWP discusses the planning priorities facing the metropolitan planning area and should describe all metropolitan transportation and transportation-related air quality planning activities anticipated within the area during the next one- or two-year period, regardless of funding sources or agencies conducting activities, in sufficient detail to indicate who will perform the work, the schedule for completing the work and the products that will be produced.

The WILMAPCO region consists of two counties. The total area is 744 square miles (396 in New Castle County and 348 in Cecil County) with a 2020 population of 674,478. Although the square mileage of the two counties is similar, their population figures are quite disparate: Cecil County had a 2020 population of 103,725, while New Castle County had 570,753. New Castle County is an urbanized county with a density of 1,441 persons per square mile while Cecil County has only 298 persons per square mile.

WILMAPCO's mission is to ensure the implementation of the best multi-modal transportation plan that meets all the requirements mandated by the Federal Clean Air Act and its Amendments (CAAA) and FAST Act and that promotes the attainment of the Goals for the Region. The Goals, Objectives and Actions arrived at by consensus through the several long-range plan updates are:

- ❖ **Support Sustainable Economic Development and Goods Movement**
  - *Objectives:*
    - Maximize our Investments
    - Develop Effective Transportation networks
    - Plan for Energy Security and Resilience
- ❖ **Efficiently Transport People**
  - *Objectives:*
    - Improve System Performance
    - Promote Accessibility and Connectivity
    - Engage the Public Via an Open Involvement Process
- ❖ **Improve Quality of Life**
  - *Objectives:*
    - Protect the Public Health and Safety
    - Promote Active Transportation
    - Ensure Transportation Choice and Equity
    - Preserve Natural and Cultural Resources



WILMAPCO performs its mission by using the Comprehensive, Continuing and Cooperative (3-C) metropolitan transportation system planning process. It serves as a cooperative regional forum for the development of transportation system plans and programs and for the resolution of transportation planning-related issues.

WILMAPCO is responsible to all the citizens of the region to ensure the implementation of the best transportation plan for the region. Therefore, the WILMAPCO Council is composed of elected officials from state, county and municipal

jurisdictions. These elected officials are accountable to their respective citizens. The implementation of the transportation plan is carried out by WILMAPCO's member agencies.

WILMAPCO collects, analyzes and evaluates demographic, land use and transportation-related data and seeks public input to understand the transportation system requirements of the region. Understanding these requirements allows for the development of plans and programs and the implementation of a transportation system that provides for the efficient transport of people, goods and services.

WILMAPCO has developed and updated a long-range Regional Transportation Plan (RTP). The RTP is a regionally based plan encompassing a twenty-year planning horizon and includes all transportation modes. The Transportation Improvement Program (TIP) is a four-year program of capital investments that implements the long-range plan. The RTP is derived from the Vision and Goals established for the region and is supported by demographic and land use data to define the transportation system investments. These transportation system investments are periodically tested and updated, and the resulting paradigms are adopted as the twenty-year horizon transportation plan.

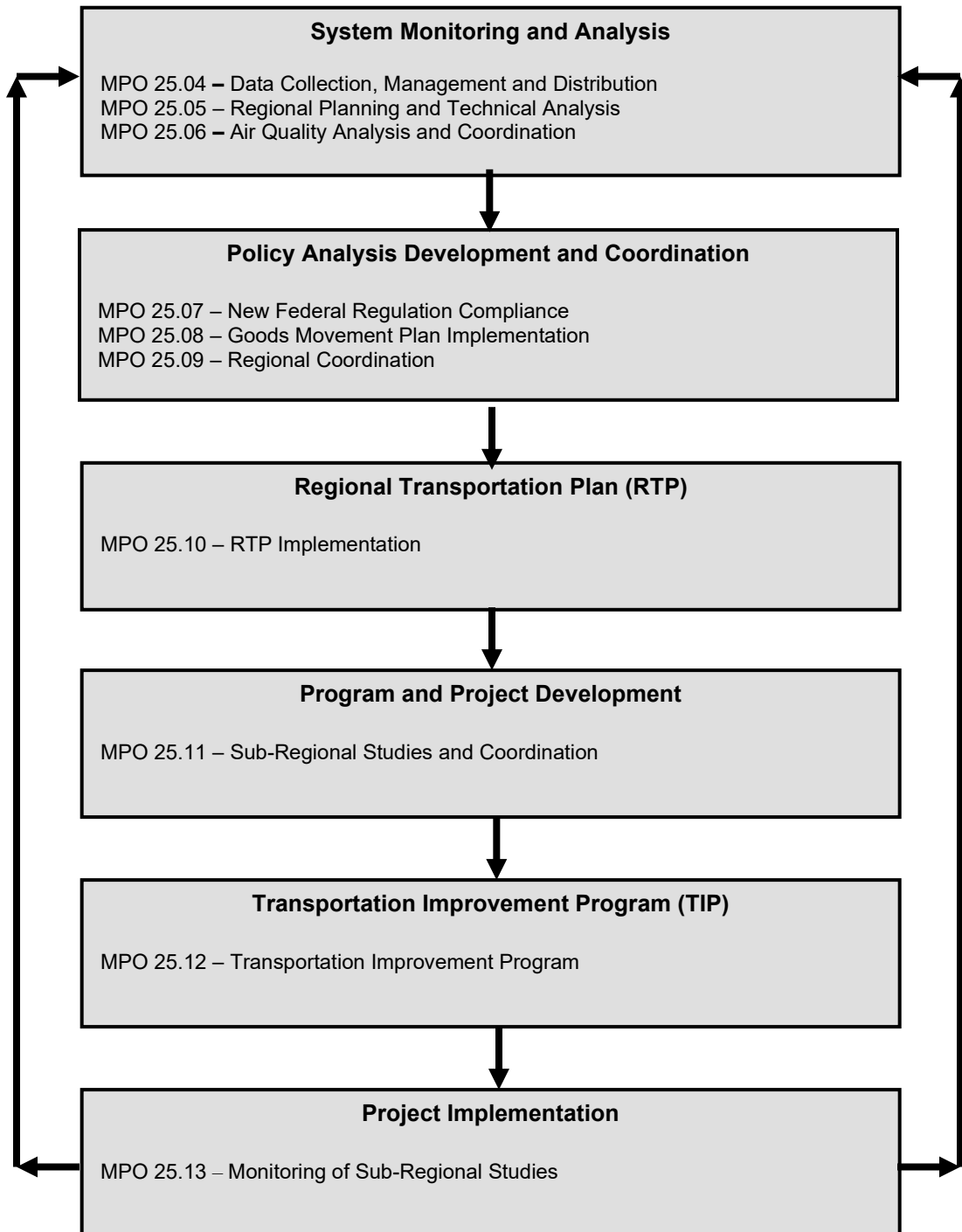
WILMAPCO evaluates the RTP within a four-year planning horizon, weighs and prioritizes elements, considers funding sources, and evaluates the potential near-term benefit to the citizens of the WILMAPCO region. The highest priority RTP projects are then incorporated into the TIP for implementation. WILMAPCO, in conjunction with its member agencies, implements these near-term elements of the RTP. In addition, WILMAPCO, as the region's metropolitan planning organization, must approve all federally funded transportation projects in the region and must select all projects other than projects on the National Highway System.

The work tasks in this UPWP are presented in a sequence that reflects the planning process used by WILMAPCO. The first three tasks describe activities that are overarching and permeate all aspects of the planning process. *Administration* provides the underpinnings of WILMAPCO's activities, the *Unified Planning Work Program (UPWP)* task provides for the development and administration of the work plan and budget that guide all of WILMAPCO's activities, and the *General Public Outreach and Education* task provides for public involvement and education throughout the planning process.

The actual planning work is reflected in the remaining work tasks. The following flow chart shows the general flow of the planning process as reflected in the Unified Planning Work Program (UPWP). Data is collected and analyzed and used to inform policy discussions. Policies are determined and incorporated into the long-range regional transportation plan (RTP). The Plan includes policies, objectives, actions, performance measures, and projects that guide the development of studies and plans. The projects that are recommended for implementation in studies and plans are programmed for capital and operating funds in the TIP. Projects programmed for engineering in the TIP are monitored by WILMAPCO to provide continuity from the planning process through the engineering process.

**WILMAPCO FY 2025 UPWP**

**Planning Flow Chart**



## II ORGANIZATION

### WILMAPCO Council

The policy making body of WILMAPCO is its Council that consists of nine voting members:

1. **Delaware Governor's appointee** – David Edgell
2. **Delaware Department of Transportation, Secretary** – Nicole Majeski
3. **Delaware Department of Transportation, Delaware Transit Corporation, Chief Executive Officer** – John Sisson
4. **City of Wilmington, Mayor** – Michael S. Purzycki
5. **New Castle County, County Executive** – Matthew Meyer
6. **New Castle County, Municipalities representative** – Eric Scott Thompson, Mayor, Town of Elsmere
7. **Maryland Governor's appointee** – Geoff Anderson, Maryland Department of Transportation
8. **Cecil County, County Executive** – Danielle Hornberger
9. **Cecil County, Municipalities representative** – Vacant

### Technical Advisory Committee (TAC)

The TAC consists of planners and engineers from all WILMAPCO participating agencies. It performs analyses and makes recommendations concerning transportation and land use issues to Council for their approval. The actual technical work is performed by WILMAPCO staff and the TAC member organizations. The TAC elects its own chairperson and vice-chair annually from among its members to serve for a one-year period from fiscal year to fiscal year, subject to approval by the Council. The following is a list of the TAC member agencies and the current representatives:

1. **Cecil County Office of Planning and Zoning** – William Goldman
2. **Delaware Department of Natural Resources and Environmental Control** – Taylor Englert
3. **Delaware Department of Transportation** – Cooper Bowers
4. **Delaware River and Bay Authority** – Stephen D. Williams
5. **Delaware Division of Small Business, Development & Tourism** – Patricia Cannon
6. **Delaware Department of Transportation, Delaware Transit Corporation** – Catherine Smith
7. **Maryland Department of Transportation** – Dan Janousek
8. **Maryland Transit Administration** – Laurie Brown
9. **Maryland Department of Planning** – David Dahlstrom
10. **Maryland State Highway Administration** – Derrick Sexton
11. **Maryland Department of the Environment** – Catherine Salarano
12. **Newark Planning Department** – Michael Fortner
13. **New Castle County Department of Land Use** – Matthew Rogers
14. **Delaware Office of State Planning Coordination**– Samantha Bulkilvish
15. **Town of Elkton** – Jeanne D. Minner
16. **Wilmington Department of Planning** – Gwinneth Kaminsky Rivera
17. **Wilmington Department of Public Works** – Steven G. Weber



Ex-Officio Members:

18. **Federal Transit Administration** – Timothy Lidiak
19. **Federal Highway Administration** – Enos Han
20. **Federal Environmental Protection Agency** – Gregory Beacoat
21. **Amtrak** – Harry Garforth
22. **Diamond State Port Corporation** – Randall Horne

Current subcommittees of the TAC are the Air Quality Subcommittee (AQS), the Congestion Management System (CMS) Subcommittee, the Demographic and Data Subcommittee, the Goods Movement Working Group, the Environmental Justice Working Group, and the Nonmotorized Transportation Working Group.

### **Public Advisory Committee (PAC)**

The Public Advisory Committee (PAC) was organized to include citizen representatives from different geographic areas throughout the WILMAPCO region that have an interest in transportation policy and public involvement. PAC members are recruited from the following groups: civic umbrella groups, business groups, public interest groups, environmental groups, transportation interest groups and agencies that represent diverse populations, such as minorities, the elderly, disabled citizens, and transit-dependent populations.

The PAC assists Council with public outreach by recommending outreach and involvement strategies; reviewing WILMAPCO publications for clarity, effectiveness and user friendliness; serving as a liaison between Council and the public for the distribution of WILMAPCO publications and information; advising Council on the needs for public education regarding WILMAPCO and regional transportation policies; and advising Council on the effectiveness of public outreach for Action Items.

Members of the PAC were recommended by the Executive Director and appointed by the Council to serve for a term of no more than three (3) years and may be reappointed by the Council for an additional term. The PAC elects its own chair and vice-chairperson annually from among its members for a term of one year from fiscal year to fiscal year, subject to approval by the Council.

### **The current membership of the PAC is as follows:**

1. **Carlos de los Ramos, AARP**
2. **Glenn Pusey, Bear/Glasgow Council**
3. **Deanna Murphy, Cecil Board of Realtors**
4. **Patricia D. Folk, Cecil County**
5. **Joshua Solge, City of Newark**
6. **William Dunn (Alternate), Civic League for NCC**
7. **Vic Singer, Civic League for NCC**
8. **William Lower, Committee of 100**
9. **Mike Kaszyski, Delaware State Chamber of Commerce (Chair)**
10. **Mark Blake, GHADA**
11. **Dave Tancredi, Milltown-Limestone Civic Alliance**
12. **Anna Quisel, NCC League of Women Voters**
13. **Barry Shotwell, 7/40 Alliance (Vice Chair)**
14. **Tracy Chamblee, MOT Alliance, Southern NCC**
15. **Serene Abiy, University of Delaware**
16. **Richard Janney, Southern NCC**

## **WILMAPCO Staff**

The day-to-day operations of the agency are performed by the WILMAPCO staff, with technical expertise in transportation systems planning and other related areas. The staff, in conjunction with WILMAPCO's member agencies, collects, analyzes and evaluates demographic, land use, and transportation data to understand the transportation system requirements of the region. They also prepare materials for use at TAC, PAC and Council meetings as well as any existing sub-committee meetings.

The professional staff members participate in all WILMAPCO meetings and provide expertise as needed. In addition, they represent the agency at other meetings of importance to planning activities within the region.

The current staff members are:

Tigist Zegeye, Executive Director

Heather Dunigan, Principal Planner

Daniel S. Blevins, Principal Planner

David Gula, Principal Planner

William Swiatek, Principal Planner

Jacob Thompson, Senior Planner

Dawn Voss, Outreach Coordinator

Sharen T. Elcock, Executive Assistant

Elizabeth Espinal, Administrative Assistant

### III FY 2025 UPWP FINANCIAL INFORMATION

**FY 2025 UPWP FUNDING ANALYSIS**  
**TOTAL FUNDS AVAILABLE**  
**and**  
**TOTAL CASH COMMITMENT**

SOURCE	TOTAL CASH COMMITMENT
<b>DELAWARE</b>	
FHWA	\$1,873,388
FTA	\$975,384
STATE	\$668,897
NEW CASTLE COUNTY	\$31,500
CITY OF WILMINGTON	\$11,796
<b>DELAWARE TOTAL</b>	<b>\$3,560,965</b>
<b>MARYLAND</b>	
FHWA	\$95,226
FTA	\$35,244
STATE	\$16,309
CECIL COUNTY	\$16,309
<b>MARYLAND TOTAL</b>	<b>\$163,088</b>
<b>GRAND TOTAL</b>	<b>\$3,724,053</b>

**FY 2025 UPWP FUNDING OUTLINE**

Task #	Task Description	Total Cash Activity
MPO 25.01	Administration	\$370,458
MPO 25.02	Unified Planning Work Program (UPWP)	\$115,265
MPO 25.03	Public Outreach & Public Education	\$210,203
MPO 25.04	Data Collection, Management & Distribution	\$147,105
MPO 25.05	Regional Planning & Technical Analysis	\$279,392
MPO 25.06	Air Quality Coordination & Analysis	\$54,408
MPO 25.07	New Federal Regulation Compliance	\$68,010
MPO 25.08	Goods Movement Plan Implementation	\$196,702
MPO 25.09	Regional Coordination	\$131,104
MPO 25.10	RTP Implementation	\$275,912
MPO 25.11	Sub-Regional Studies and Coordination	\$917,721
MPO 25.12	Transportation Improvement Program (TIP)	\$80,897
MPO 25.13	Monitoring of Sub-Regional Studies Implementation	\$618,995
<b>TOTAL</b>		<b><u>\$3,466,171</u></b>
Vacation and Holiday		\$257,882
<b>Grand Total</b>		<b>\$3,724,053</b>

**WILMAPCO Consultant Costs (included in cash activity above) 2025.**

MPO 25.01	<i>BOOKKEEPING</i>	\$12,000
MPO 25.03	<i>URBAN BIKE PROJECT: EARN A BIKE &amp; TRIP FOR KIDS PROGRAM</i>	\$3,000
MPO 25.03	<i>NEWARK BIKE PROJECT</i>	\$2,500
MPO 25.04	<i>INTERSECTIONS COUNTS – REGIONAL</i>	\$25,000
MPO 25.04	<i>REGIONAL MODELING SUPPORT</i>	\$20,000
MPO 25.05	<i>CONGESTION MANAGEMENT SYSTEM CONSULTANT SUPPORT</i>	\$40,000
MPO 25.05	<i>REGIONAL TRANSPORTATION PERFORMANCE MEASUREMENT DEVELOPMENT</i>	\$60,000
MPO 25.08	<i>FIRST/FINAL MILE FREIGHT NETWORK – UPDATE</i>	\$100,000
MPO 25.10	<i>CONSULTANT SUPPORT</i>	\$250,000
MPO 25.11	<i>WILMINGTON INITIATIVES SUPPORT</i>	\$20,000
MPO 25.11	<i>SR2, KIRKWOOD HIGHWAY CORRIDOR LAND USE and TRANSPORTATION PLAN</i>	\$200,000
MPO 25.11	<i>NEW CASTLE COUNTY STRATEGIC ACTION PLAN</i>	\$100,000
MPO 25.11	<i>AUGUSTINE CUT-OFF CORRIDOR BICYCLE &amp; PEDESTRIAN NETWORK IMPROVEMENTS, PHASE 2</i>	\$100,000
MPO 25.11	<i>ROCKY RUN PATHWAY UNDERPASS FEASIBILITY STUDY</i>	\$100,000
MPO 25.11	<i>MD ROUTE 272 CORRIDOR STUDY</i>	\$125,000
MPO 25.13	<i>US 202 CORRIDOR MONITORING SUPPORT</i>	\$135,000
MPO 25.13	<i>ARDENS TRANSPORTATION PLAN MONITORING SUPPORT</i>	\$25,000
MPO 25.13	<i>SNCCMP TRAFFIC MONITORING SUPPORT</i>	\$10,000
MPO 25.13	<i>NORTH CLAYMONT AREA MASTER PLAN MONITORING SUPPORT</i>	\$17,000
MPO 25.13	<i>NEWPORT TRANSPORTATION PLAN MONITORING SUPPORT</i>	\$20,000
MPO 25.13	<i>GOVERNOR PRINTZ BLVD CORRIDOR MONITORING SUPPORT</i>	\$17,000
MPO 25.13	<i>NCC RT 40 CORRIDOR MONITORING SUPPORT</i>	\$35,000
MPO 25.13	<i>CHURCHMANS CROSSING PLAN MONITORING SUPPORT</i>	\$165,000
		<b>\$1,581,500</b>

#### **IV FY 2025 WORK TASKS – WILMAPCO**

##### **MPO 25.01 – ADMINISTRATION**

###### **25.01.01 – General Administration**

*ADMINISTRATOR: Tigist Zegeye, Executive Director and Sharen T. Elcock, Executive Assistant*

This task includes all office management functions including purchasing all supplies, office equipment and computer equipment, maintaining equipment and facilities and developing the most cost-effective and efficient methods of providing the necessary support for staff, member agencies and the public. This task also includes updating and maintaining WILMAPCO's database of interested citizens, consultants, state and local officials, and committee members. In addition, weekly staff meetings keep staff informed of WILMAPCO activities and provide direction and the exchange of ideas.

###### **25.01.02 – Financial Administration**

*ADMINISTRATOR: Tigist Zegeye, Executive Director and Sharen T. Elcock, Executive Assistant*

This task includes all financial and accounting functions including preparation of monthly Financial Status Reports and monthly billing reports. This task also provides for annual audits, annual budget development and monitoring, and coordination with federal fund administrators.

**\$12,000 Bookkeeping**

###### **25.01.03 – Personnel Administration**

*ADMINISTRATOR: Tigist Zegeye, Executive Director and Sharen T. Elcock, Executive Assistant*

This task includes all personnel functions including recruiting and hiring of new personnel, maintaining personnel records, coordinating employee evaluations, administering employee benefits programs, and performing payroll functions including preparation of all tax returns, W-2s and 1099s.

###### **25.01.04 – Support for Council, Committees and Subcommittees**

**ADMINISTRATORS:**

**Council:** *Tigist Zegeye, Executive Director*

**Technical Advisory Committee:** *Heather Dunigan, Principal Planner*

**Public Advisory Committee:** *Dave Gula, Principal Planner*

**Air Quality Subcommittee:** *William Swiatek, Principal Planner*

**Congestion Management System Subcommittee:** *Daniel Blevins, Principal Planner*

**Demographics and Data Subcommittee:** *Daniel Blevins, Principal Planner*

**Nonmotorized Transportation Working Group:** *Heather Dunigan, Principal Planner*

**Goods Movement Working Group:** *Daniel Blevins, Principal Planner*

**Transportation Justice Working Group:** *William Swiatek, Principal Planner*

The Council, with the support of the advisory committees, determines WILMAPCO policy, approves the expenditure of federal transportation funds in the WILMAPCO region, and oversees staff planning and agency coordination activities. Staff efforts ensure that the Council and the supporting advisory committees' function effectively, that materials and information are developed on a timely basis to support council decisions, and that public meetings are regularly held. This task includes time and expenses for staff preparation and attendance at all WILMAPCO Council, committee and sub-committee meetings including development of materials (agendas, minutes, reports) as well as mailings.

###### **25.01.05 – Staff Training and Education**

*ADMINISTRATOR: WILMAPCO Staff*

Ongoing staff training includes attendance at conferences, seminars and training sessions. Employee training needs are also identified, and appropriate classes and/or training programs are made available to employees to enhance their skills.

###### **25.01.06 – Other**

*ADMINISTRATOR: Tigist Zegeye, Executive Director and Sharen T. Elcock, Executive Assistant*

Other administrative tasks as identified.

**OUTCOME AND FINAL PRODUCT:** Efficient operation of the WILMAPCO Council and offices, accurate financial and budget information, efficient personnel administration, well-staffed committees provided with all necessary information to perform their functions, effective staff communications, and knowledgeable and well-trained staff.

SCHEDULE: FY 2025

TASK TYPE: Recurring

PUBLIC PARTICIPATION: All WILMAPCO Council, committee and subcommittee meetings are open to the public and databases are maintained to ensure that as many people as possible are kept informed of WILMAPCO activities. All financial reports are made available to the public at TAC and Council meetings or by request.

BENEFIT: Optimal utilization of planning funds by ensuring that WILMAPCO is run efficiently, cost effectively and within budget, with well-trained and educated staff, and informed committees.

PARTICIPANTS: WILMAPCO Staff

TOTAL COSTS:

<b>Resource Allocation</b>	WILMAPCO	\$358,458
	CONSULTANT	\$12,000
	<b>TOTAL</b>	<b>\$370,458</b>
<b>Cost Allocation</b>		<b>Total Cash Budget</b>
FHWA DE		\$186,359
FTA DE		\$97,028
FHWA MD		\$9,473
FTA MD		\$3,506
Delaware		\$66,540
Maryland		\$1,622
New Castle County		\$3,134
Cecil County		\$1,622
City of Wilmington		\$1,173
<b>TOTALS</b>		<b>\$370,458</b>

**MPO 25.02 – UNIFIED PLANNING WORK PROGRAM (UPWP)**

**25.02.01 – UPWP Preparation**

*ADMINISTRATOR: Tigist Zegeye, Executive Director, Sharen T. Elcock, Executive Assistant, and Staff*  
WILMAPCO, in cooperation with the states of Delaware and Maryland and operators of publicly owned transit, develops a UPWP to meet the requirements of 24 CFR Part 420, sub-part A that states, “In urbanized areas with populations of 200,000 or more, the states' Metropolitan Planning Organization (MPO) shall develop a UPWP, which describes urban transportation and transportation-related air quality planning activities anticipated in the metropolitan area during the next one- or two-year period including all planning work to be performed regardless of funding source or the agencies conducting activities. The UPWP will also indicate who will perform the work, the schedule for completing it, and its products.” This task provides for the development of the FY 2025 UPWP by the WILMAPCO staff.

**25.02.02 – UPWP Administration**

*ADMINISTRATOR: Tigist Zegeye, Executive Director and Sharen T. Elcock, Executive Assistant*  
This task provides for the administration of the UPWP throughout the fiscal year including distribution of the document, preparation of funding agreements, contract administration, and preparation of proposed amendments and updating the document as required.

**25.02.03 – Other**

*ADMINISTRATOR: Tigist Zegeye, Executive Director and Sharen T. Elcock, Executive Assistant*  
Other UPWP tasks as identified.

**OUTCOME AND FINAL PRODUCT:** The FY 2025 Unified Planning Work Program will contain documentation of all transportation planning activities in the WILMAPCO region.

**SCHEDULE:**

Draft Review by TAC and PAC	March 2024
Draft UPWP 30-Day Public Comment Period	April 4, 2024–May 3, 2024
Final Draft Approval by TAC and PAC	April 2024
Council Approval	May 2024
Submission to DeIDOT and MDOT	May 2024
Implementation	July 1, 2024

**TASK TYPE:** Recurring

**PUBLIC PARTICIPATION:** The public is invited to attend all TAC and PAC meetings during the development of the UPWP and the final draft will be available for public review from April until adoption by the Council in May. The public review period will be advertised in local newspapers.

**BENEFIT:** A document that guides planning activities in the Wilmington metropolitan region.

**PARTICIPANTS:** WILMAPCO Staff, TAC, PAC and Council



TOTAL COSTS:

<b>Resource Allocation</b>	WILMAPCO	\$115,265
	CONSULTANT	\$0
	<b>TOTAL</b>	\$115,265
<b>Cost Allocation</b>		
<b>Cost Allocation</b>		<b>Total Cash Budget</b>
FHWA DE		\$57,984
FTA DE		\$30,190
FHWA MD		\$2,947
FTA MD		\$1,091
Delaware		\$20,703
Maryland		\$505
New Castle County		\$975
Cecil County		\$505
City of Wilmington		\$365
<b>TOTALS</b>		\$115,265

## **MPO 25.03 – PUBLIC OUTREACH AND PUBLIC EDUCATION**

**OBJECTIVE AND TASK DESCRIPTION:** Provides for public education and participation in transportation planning decisions in the WILMAPCO region. Federal and State transportation planning laws and regulations require public involvement in the process. These requirements reflect the fact that transportation decisions are more likely to be effective, add value to the surrounding communities, and be implemented in a timely manner when the public is involved in the process.

This task provides for the staff time for general public involvement in the transportation planning process at WILMAPCO. In addition to the specific sub-tasks described below, this task also provides for staff time to make presentations and brief interested groups and elected officials; participate in public meetings and workshops; and general staff liaison and coordination of work with other agencies and groups. Individual planning efforts and their public involvement activities are budgeted in those specific work tasks later in this document.

### **25.03.01 – Public Meetings and Outreach**

*ADMINISTRATOR: Dawn Voss, Outreach Coordinator and Staff*

- A. General Public - Staff will identify organizations and individuals representing a broad spectrum of community interests and encourage their participation in the transportation planning process. This will include working to identify new stakeholders and building relationships with underserved populations within the region. A variety of methods will be used, including public meetings, workshops, walking workshops, conferences, seminars, presentations, health and safety events, stakeholder and municipal groups, and other outreach activities as appropriate. Staff will explore new locations to hold public workshops. Venues where people are already present will be sought. Meetings will also be held in a variety of ADA compliant locations to reach a wider audience. Each project will use an array of formats specific to the needs of the community.
- B. Targeted Audiences – Public participation strategies will be developed that fit the audience and its particular needs, rather than using a “one size fits all” approach. Staff will strive to understand the interests and concerns of target audiences in order to determine the most relevant content and most efficient ways to communicate with and engage each segment. Staff will target specific audiences, go where people are, and participate in events targeted to those audiences.
- C. Transportation Justice Outreach – When working in communities identified in the 2019 Transportation Justice Report, additional outreach measures will be employed. Communities of particular concern include ethnic and racial minorities, low income, those with disabilities, female-headed households with children, and those with Limited English Proficiency. When working in these communities, additional strategies may include investing in relationship building, encouraging local leadership in studies, acknowledging any past harm done by transportation and land use planning, striving for equitable participation, and aiming for community empowerment.

### **25.03.02 – Development of Public Information Documents**

*ADMINISTRATOR: Dawn Voss, Outreach Coordinator and Staff*

Brochures, booklets, pamphlets, flyers, and videos will be developed to promote general WILMAPCO efforts as well as individual tasks. Supplemental guides may also be created to provide more detailed information regarding topics such as: air quality, the TIP process, the RTP Update, or the public involvement process. A public friendly TIP summary document will be created to provide ease of understanding of the larger TIP document. Transportation planning information will be conveyed in language and context that is easily understandable to the lay citizen. Acronyms, abbreviations, and jargon will be kept to a minimum and all necessary background information on documents prepared will be provided to ease understanding of transportation planning processes and programs. Easy to understand documents and/or videos will be developed explaining steps in the planning process and typical timelines involved. Real examples and success stories will be used to demonstrate how public ideas have influenced planning outcomes. Staff will develop literature and videos that promote awareness of WILMAPCO’s achievements and capabilities.

### **25.03.03 – Newsletter and E-News**

*ADMINISTRATOR: Dawn Voss, Outreach Coordinator and Staff*

A quarterly newsletter focusing on transportation issues, plans, projects and, programs will be produced and distributed to a database of interested parties. The newsletter will be distributed via postal mail and electronically on a quarterly basis. In addition, a monthly electronic newsletter will be sent out with current meeting information and brief stories of interest to the MPO’s e-mail address list. Effort will be made in newsletters to include examples where the public has impacted the transportation planning process and outcomes.

#### **25.03.04 – Development of Multimedia Presentations and Videos**

*ADMINISTRATOR: Dawn Voss, Outreach Coordinator and Staff*

To expand the public's awareness of WILMAPCO, staff will develop various presentations and/or videos to educate the public on the importance of their involvement in the transportation planning process. PowerPoint presentations and videos will be created to show to civic and community groups, city, town, and county council meetings, and other interested organizations. These presentations and videos may focus on several topics, including the TIP development process, interregional coordination, community and regional planning, RTP development, and freight studies.

#### **25.03.05 – Webpage Management**

*ADMINISTRATOR: Dawn Voss, Outreach Coordinator; William Swiatek, Principal Planner; and Staff*

Maintain, update, and continue to improve the WILMAPCO webpage, which provides information including meeting dates, times, locations, and agendas for upcoming Council, Committee, Subcommittee, and other related meetings; publishes and makes available WILMAPCO's plans and studies; and informs the public about opportunities to participate. The webpage also provides access to the UPWP, the TIP, RTP, PPP, and other planning documents, as well as planning data and maps; and provides another method of presenting information and receiving comments on draft documents and planning activities in the region.

#### **25.03.06 – School Children Education, Safe Routes to School Program, Safe Kids Delaware**

*ADMINISTRATOR - Dawn Voss, Outreach Coordinator; and Heather Dunigan, Principal Planner*

A School Children's Transportation Curriculum was developed in 2001 and adjustments have been made to improve its effectiveness. In 2010 the program was correlated to Delaware State learning standards and integrated into the statewide curriculum used by all Delaware schools. Staff will continue to work with other local schools and community centers by participating in educational cluster sessions, GIS days, summer camps, and other educational activities and events. WILMAPCO's Safe Routes to School Program helps create safe, convenient, and fun opportunities for children to bicycle and walk to and from schools by helping to secure federal funding for infrastructure improvements including crosswalk, sidewalk and sign improvements; and developing education and encouragement strategies. Staff will work with elementary schools, DOT's, health educators, AAA Delaware, local police departments, Safe Kids Delaware, advocacy groups, and other local partners to coordinate SRTS programs. Educational and encouragement highlights include Walk and Bike to School Days, Park-n-Walk/Bike events, bike and pedestrian rodeos, safety assemblies, art contests, health and safety fairs, surveys, poster contests, and many other educational activities and events. Staff will continue efforts to coordinate SRTS programs including, chairing and organizing meetings, coordinating walk and bike to school events, offering incentive items, partnering with outside organizations, and conducting events and activities that educate and encourage students to walk and bike to school safely. WILMAPCO also develops pedestrian and bicycle safety education activities, events, materials and videos in partnership with Safe Kids Delaware.

#### **Urban Bike Project**

The Earn-a-Bike Program serves the community's needs, provides for transportation choice and improves quality of life by engaging youth about biking. This project sparks the cultural change necessary to view the bicycle as an appropriate, affordable, healthy and energy-efficient form of transportation. In addition, the project instills a positive work ethic and occupies the student's after-school and weekend hours with a positive, productive, and self-esteem building program. The program includes class instruction allowing students to become proficient in the use, identification, and maintenance of bicycle parts and tools, and safe riding skills. Under supervision from Urban Bike Project staff, the youth begin construction of their bicycles from spare parts. Youth are tested on their understanding of safe riding habits before receiving the bicycles they have built from scratch. The program also includes bicycle-riding activities for the youth such as riding around local neighborhoods, practice using bicycle racks on buses, and bicycling along scenic greenways and park trails. Laura Wilburn (Urban Bike Project) administers this project.

**\$3,000 is budgeted for the program**

#### **Newark Bike Project Education and Youth Program**

Newark Bike Project's youth program uses bicycle education as a means of pursuing the organization's mission to work towards sustainability through emphasizing community, education, and empowerment. Youth programs include support for local safe routes to school programs in partnership with WILMAPCO, City of Newark, Christina School District, DeIDOT and Bike Newark; partnership with local schools to teach bicycle safety and maintenance; and the Youth Empowerment Program. The Youth Empowerment Program is aimed at youth ages 9 to 14 and includes community service and bike activities that foster the use of bicycling as transportation and promote safety. Other bicycle safety education programs focus on safer bicycling education for the University of Delaware and greater Newark communities.

**\$2,500 is budgeted for the program.**

### **25.03.07 – Coordination with Other Agencies on Public Outreach**

*ADMINISTRATOR – Tigist Zegeye, Executive Director; Dawn Voss, Outreach Coordinator; and Staff*

Staff will coordinate public involvement activities with other jurisdictions and agencies, particularly those focused on transportation. This includes participating and arranging local conferences and events and conducting exhibit tables during events. It also includes conducting seminars and conferences that educate target audiences on design, development, and technological advances furthering WILMAPCO's mission and goals. Staff will work to facilitate the sharing of WILMAPCO information and events with other agencies and organizations via website, social media, newsletters, and any other means available. Staff will participate in the development and scoping of a variety of plans and studies that further the goals and strategies of the RTP. Staff will also conduct legislative briefings for area elected officials as determined by community and area planning advisory committees, or major funding or policy changes.

### **25.03.08 – Air Quality Public Outreach**

*ADMINISTRATOR – Dawn Voss, Outreach Coordinator and William Swiatek, Principal Planner*

This task provides for the oversight of outreach efforts to the public and legislators on air quality matters. This includes participation with the Air Quality Partnership of Delaware (AQP). AQP is a public/private coalition of businesses, agencies, and individuals working to raise awareness and inform the public about practices that improve air quality and citizen health statewide in Delaware, and across New Castle and Cecil Counties. The Partnership includes Dover/Kent MPO, DNREC, DART First State, Delaware Commute Solutions, Chesapeake Utilities, Bruce Productions, American Lung Association of Delaware, and others. AQP has developed a mascot (Tropo) to message and educate about air quality matters. This approach provides an interactive and fun method to convey important air quality matters and provides a strong foundation for retention and understanding of targeted messaging. AQP has developed an outreach assembly program for youth and their families to increase awareness of how clean air impacts health, and how daily activities affect the environment and their health and converted the in-person assembly into an easily sharable video format. AQP also coordinates Delaware Air Quality Awareness Week, a social media campaign that encourages use of alternative modes of transportation throughout the week via contests, videos and social media posts. The partnership also participates in Wilmington's Earth Day event.

### **25.03.09 – Transportation Justice Outreach**

*ADMINISTRATOR – Dawn Voss, Outreach Coordinator and William Swiatek, Principal Planner*

WILMAPCO's PAC and Transportation Justice Working Group help to develop strategies to engage minority, low-income, senior, disabled, households without an automobile, low-literacy, and Limited-English Proficiency communities in the transportation decision-making process. Strategies outlined in WILMAPCO's Public Participation Plan (PPP) and Transportation Justice Plan seek to reduce the participation barriers that these communities often experience. Staff also attends and helps to organize expos, exhibits, and conferences to better engage and understand the evolving needs of these constrained populations and will attend trainings specific to outreach to these communities.

### **25.03.10 – Social Media and Video Outreach and Education**

*Administrator – Dawn Voss, Outreach Coordinator; and Staff*

Social media tools such as Facebook, Instagram, Twitter, YouTube, and Nextdoor may be used to supplement traditional communication methods and increase meaningful interaction with the communities WILMAPCO serves. Social media will be used to promote WILMAPCO and partner organization events and may include boosted posts and events. Staff will share articles, websites, or online information as appropriate. Staff will also work to create online content via outreach videos focusing WILMAPCO's planning efforts, the planning process, and safety education.

### **25.03.11 – Other**

*ADMINISTRATOR: Dawn Voss, Outreach Coordinator*

Other Public Outreach tasks as identified.

**OUTCOME AND FINAL PRODUCT:** A process and products that educate the public on transportation plans and processes in the region and encourages citizen initiative, involvement, and comment. Educational programs and events are designed to educate the citizens of New Castle County and Cecil County on transportation planning and programming and opportunities for involvement.

**SCHEDULE:** FY 2025

**TASK TYPE:** Recurring

**PUBLIC PARTICIPATION:** The public is invited to attend all PAC, TAC, and Council meetings during the development of the work products described above. Individual public meetings and workshops will be advertised in local newspapers and will be publicized through press releases and media relations work with local newspapers, radio, and television stations. A Calendar of Events will be published quarterly and will include dates, times, and locations of all regular WILMAPCO Council, TAC, PAC, and subcommittee meetings, as well as special project meetings.

**BENEFIT:** A better-informed public who will be more equipped to make intelligent and responsible transportation decisions and a transportation system that better serves the needs of the public.

**PARTICIPANTS:** General Public, WILMAPCO, PAC

**TOTAL COSTS:**

<b>Resource Allocation</b>	WILMAPCO	\$204,703
	CONSULTANT	\$5,500
	<b>TOTAL</b>	\$210,203
<b>Cost Allocation</b>		
<b>Cost Allocation</b>		<b>Total Cash Budget</b>
FHWA DE		\$105,743
FTA DE		\$55,055
FHWA MD		\$5,375
FTA MD		\$1,989
Delaware		\$37,756
Maryland		\$921
New Castle County		\$1,778
Cecil County		\$921
City of Wilmington		\$666
<b>TOTALS</b>		\$210,203

## **MPO 25.04 – DATA COLLECTION, MANAGEMENT, AND DISTRIBUTION**

OBJECTIVE AND TASK DESCRIPTION: To develop, research, and analyze data that assists member agencies and the public with understanding the demographic, economic, and transportation planning issues confronting the WILMAPCO region. This task will result in a number of analytical reports on various issues, the analysis for different studies and plan implementation, and the development of projects for the Transportation Improvement Program (TIP). Under this task, WILMAPCO staff will also provide technical assistance to member agencies, organizations, businesses and residents, as requested.

### **25.04.01 – Data Collection**

*ADMINISTRATOR: Daniel Blevins, Principal Planner, William Swiatek, Principal Planner and Jacob Thompson, Senior Transportation Planner*

To produce more useful analysis tools, specific data must be collected on a frequent basis. Data collection activities will include:

- Regional Traffic Counts. This task will include collection of turning movement counts and other traffic data as needs are identified. The data collected will serve as input into the WILMAPCO Congestion Management System (CMS) and support for monitoring of sub-area studies. **\$25,000 is budgeted for the counts.**
- Roadway Travel Time runs will continue in New Castle County (funded through DelDOT) and in Cecil County. The travel time runs will collect travel speed and delay data on major roadways in our region and will serve as a primary input into the WILMAPCO Congestion Management System (CMS).
- Additional traffic counts will be done in Cecil County, to help analyze both current and future transportation needs. Specific locations will be determined as part of this task in cooperation with MDOT and Cecil County.
- Travel demand data for use in planning activities such as the CMS and the long-range regional transportation plan (RTP) will be generated and maintained.
- Information on pedestrian travel will be collected for use in planning and project analysis and other uses as needed.

### **25.04.02 – Data Updating, Management and Acquisition**

*ADMINISTRATORS: Daniel Blevins, Principal Planner, Jacob Thompson, Senior Transportation Planner and Staff*

This task includes recurring efforts such as the development of population and employment estimates and geographic information system management. This task also includes technical assistance to member agencies and reflects the needs that member agencies have identified during the Unified Planning Work Program development.

- **Population and Employment Estimates**

To provide location-specific, accurate population estimates, future population and employment projections, and housing and employment data by traffic analysis zones (TAZs) for use in the regional transportation planning process. Estimates and projections in this task will be based on the most current Delaware Population Consortium, Maryland Office of Planning, New Castle County and Cecil County data. Data derived from this task will be utilized in transportation network modeling, land use simulation models, analysis of sub-regional projects and studies, and the future updates of the WILMAPCO Regional Transportation Plan (RTP).

- **Geographic Information Systems**

A regional Geographic Information Systems (GIS) database will be coordinated by staff to better organize and maintain the vast amounts of spatially related data developed by member agencies. The database will make the management and tracking of transportation project status, development patterns, and demographic data, among others, much easier to comprehend. The following contains a listing and abbreviated description of some of the components of the regional GIS development:

- Annual Travel Time and Delay data for all major arterials/freeways in New Castle and Cecil Counties
- Annual Park and Ride Usage

Staff will maintain, update, and map a project database so that projects can be listed, tracked and utilized by WILMAPCO's GIS. The database will include projects from the Transportation Improvement Program (TIP) and projects contained in the Regional Transportation Plan (RTP) constrained projects. Staff will work with New Castle County, Cecil County, DelDOT, and MDOT to compile GIS road coverages including classification, AADT, capacity and other transportation-related data elements, including land use and zoning data for planning purposes.

- **Data Acquisition**

In order for WILMAPCO to continue producing its regional performance-based documents, large amounts of data are required for their development. As a result, WILMAPCO relies on its member agencies to provide several data items delivered in a timely manner to allow for staff to produce the desired outcomes. In order to

better serve the needs of our planning activities, a list of additional needed data from member agencies is provided below:

Data	Description	County	Responsible Agency	Delivery Date
Pavement Conditions	Tabular data file of roadway conditions during FY 2023. Includes: - NCC: Total centerline miles and quality rated either Good, Fair or Poor - Cecil: Total centerline miles and quality rated either Very Good, Good, Fair, or Poor	New Castle/Cecil	DeIDOT/MDSHA	August 2024
Bridge Inventory and Conditions	Tabular/GIS file of all Bridges with each county in the region and their status (Structurally Deficient and Functionally Obsolete) for FY 2023	New Castle/Cecil	DeIDOT/MDSHA	August 2024
Annual Crash Statistics	GIS file of all reported crashes and associated attribute data for calendar year 2023	New Castle	DeIDOT	June 2024
Annual Transit Ridership	Tabular data consisting of transit operations statistics (Monthly and Annual): - Total Transit Ridership by service type and route - On-Time performance for paratransit and fixed route services - Transit costs per trip for paratransit and fixed route services - Total Annual Route Mileage for paratransit and fixed route services	New Castle	DTC	August 2024
Completed Projects- FY 2022	GIS file of all projects completed during the fiscal year	New Castle	DeIDOT	August 2024
EZ Pass/MTag Usage	Tabular file of Monthly/Annual totals at all toll collection facilities including: - SR 1 & Dover, Smyrna, Denney Rd. Biddles Corner and Boyd's Corner Rd. - I-95 @ DE/MD Line - I-95 @ Kent/Cecil Border	New Castle/Cecil	DeIDOT/MDSHA	August 2024
Transit Data	Updated GIS files for DTC bus stops, transit routes and headways	New Castle	DTC	August 2024
Air Quality Data	Tabular speed vs. emission data for ozone and PM2.5. In addition, GIS shapefiles of each benchmark year (including base year), containing Model AADT, VMT, VHT, emissions and truck volumes	New Castle	DeIDOT	With each model run
Parcel Data	Updated GIS file for parcels in New Castle County, with descriptive attribute data, including the number of units per parcel	New Castle	NCC-LU	October 2024

- Regional Model Development and Support**  
 Assist DeIDOT modeling in developing input for all travel demand models. Effort needed to continue to incorporate relevant truck/rail traffic data into their travel demand model to help facilitate better investment decisions. Funding allows for periodic reviews that should be performed to ensure all base year model inputs are based on the most recent data collection activities. Travel demand data for use in planning activities such as the CMS and the long-range regional transportation plan (RTP) will be generated and maintained. **\$20,000 is budgeted for consultant support.**
- Data Report Production**  
 Provide timely updates to regularly published data summaries.

### **25.04.03 – Data Distribution and Local Planning Support**

*ADMINISTRATOR: Daniel Blevins, Principal Planner, William Swiatek, Principal Planner, Jacob Thompson, Senior Transportation Planner*

Staff will provide technical data to WILMAPCO member agencies, local municipalities and other entities. The data provided typically includes traffic counts, accident data, demographic projections, and data developed for the RTP. Staff will work with member agencies to improve data collection activities. The following are some anticipated data management and distribution projects:

- Maintain a WILMAPCO Data Clearinghouse for regional data provided by member agencies and other sources that will be accessible via the WILMAPCO website and by request. The clearinghouse will function as a common site for data to be shared/exchanged between various groups to improve data gathering for various activities. Data such as population/employment projections, roadway network coverages, municipal boundaries, annual transit ridership figures, and other data sets will be listed on the site. The data will be accessible by direct downloading from the website, links to other websites containing the listed data, or by submitting a request to WILMAPCO staff for the data. This format also allows for accommodating individual public data requests.
- Produce a series of WILMAPCO Data Reports containing data, maps and other information pertaining to the region. The document will be accessible by direct downloading from the website and hardcopy by request.
- Develop a summary of travel time data and analyze its impact on various parts of our region. Utilizing existing data, the project will illustrate short-term and long-term shifts in travel times and the possible implications for transportation planning activities.
- Support planning exercises for local municipalities and civic groups through the provision of specialized planning information and data products.
- Accommodate individual requests from the public, providing data in a variety of formats.

### **25.04.04 – Public Opinion Survey**

*ADMINISTRATOR: Dawn Voss, Outreach Coordinator*

WILMAPCO's Public Opinion Survey provides data on the public perception of transportation facilities and services. The results are used to monitor public concerns and opinions and develop policy in the RTP. The Cecil County Public Opinion Survey and the New Castle County Public Opinion Survey have been revised and combined into one survey that will be conducted every four years, in concurrence with Regional Progress Report updates. This will be used in conjunction with the data received from DelDOT and other transportation agencies. WILMAPCO's Public Opinion Survey allows the MPO to track the opinions of residents over time, to identify trends, and provide direction for policies. The surveys also provide data regarding topics such as: which modes of transportation are most favored, the most effective methods to improve the transportation system; how land use, growth and development should be controlled; and the most favored public outreach methods. Results are then used, in conjunction with other outreach efforts, to set policies for future planning efforts.

### **25.04.05 – Other**

*ADMINISTRATOR: Daniel Blevins, Principal Planner*

Other data collection, management, and distribution tasks as identified.

#### **OUTCOME AND FINAL PRODUCT:**

Staff, with consultant assistance, will produce a series of annual population and employment estimates for the region that will serve as inputs for updates of the RTP, TIP, transportation network model, and subsequent sub-regional transportation plans. Additional products may include reports such as a project summary report that includes findings resulting from the project and an evaluation of project results, data limitations, problems and methods needed to resolve them. Staff will produce a comprehensive GIS database containing, among other elements: upcoming TIP projects, intersection data, roadway geometry data, traffic volumes, population and employment data, proposed development listings, and travel demand forecasts. Staff will maintain the regional data clearinghouse and produce spreadsheets and maps of available data as requested. Demographic data will also be produced to identify targeted populations for environmental justice analysis and outreach.

SCHEDULE: FY 2025

TASK TYPE: Recurring

PUBLIC PARTICIPATION: There is a 30-day public comment period on all population and employment numbers. The public is invited to attend all TAC and PAC meetings during the development of the work products described above. Individual public meetings and workshops will be advertised in local newspapers and will be publicized through press releases, the WILMAPCO website, and media relations work with local newspapers and radio and television stations.



**BENEFIT:** Knowledgeable member agencies and residents better able to contribute to the planning process; increased use of sophisticated demographic data in the planning process; and more accurate travel models that promote better plan development. Population and Employment estimates will provide a useful tool for updating and monitoring the WILMAPCO RTP, network model, and other regional and sub-regional transportation planning needs. This task will also provide reports and/or maps as requested for specific uses such as travel and demographic data analysis and area study GIS maps. Activities will be better coordinated between member agencies, local municipalities and other entities.

**PARTICIPANTS:** WILMAPCO Staff, Demographics Subcommittee, Congestion Management Subcommittee, Member Agencies and Municipalities

**TOTAL COSTS:**

<b>Resource Allocation</b>	WILMAPCO	\$102,105
	CONSULTANT	\$45,000
	<b>TOTAL</b>	\$147,105
<b>Cost Allocation</b>		
<b>Cost Allocation</b>		<b>Total Cash Budget</b>
FHWA DE		\$74,001
FTA DE		\$38,529
FHWA MD		\$3,762
FTA MD		\$1,392
Delaware		\$26,422
Maryland		\$644
New Castle County		\$1,244
Cecil County		\$644
City of Wilmington		\$466
<b>TOTALS</b>		\$147,105

## **MPO 25.05 – REGIONAL PLANNING AND TECHNICAL ANALYSIS**

### **25.05.01 – Congestion Management System & Intersection Operations Analysis Development**

*ADMINISTRATOR: Daniel Blevins, Principal Planner, William Swiatek, Principal Planner, Jacob Thompson, Senior Transportation Planner*

Staff and the CMS Subcommittee will collect and analyze data from a variety of sources including traffic impact studies, cordon study counts, intersection turning movement counts, travel demand model output, and corridor travel time analyses in order to update the WILMAPCO CMS Report. Based on this data, congested corridors or areas will be identified and a screening process will be applied to determine the most appropriate congestion mitigation strategies for each corridor or area. The effectiveness of strategies recommended in previous CMS reports will be assessed. **\$40,000 is budgeted for consultant support.**

### **25.05.02 – Regional Progress Report**

*ADMINISTRATOR: William Swiatek, Principal Planner and Jacob Thompson, Senior Transportation Planner*

To gauge how well the region is progressing towards the goals developed in the Regional Transportation Plan (RTP) and Public Participation Plan (PPP), staff will develop a Regional Progress Report in preparation for each RTP. Using data-driven performance measures where possible, the report tracks the progress of each action in the RTP. Red, yellow, and green light indicators are provided for each action representing poor, partial, and full progress.

### **25.05.03 – Title VI Plan and Transportation Justice Analysis**

*ADMINISTRATOR: William Swiatek, Principal Planner, Jacob Thompson, Senior Transportation Planner, Dawn Voss, Outreach Coordinator, Sharen T. Elcock, Executive Assistant*

Measures will continually be developed to better assess the mobility and public participation constraints of our region's low income and minority communities, in step with our obligations under the federal Environmental Justice initiative, our Title VI mandate and other directives and initiatives. Staff will seek to understand the mobility challenges of other populations constrained by our transportation system – seniors (those aged 65+), people with disabilities, and those who live in households without vehicles. These groups are referred to collectively as our Transportation Justice (TJ) communities. Staff produced an updated TJ Plan in 2019 and followed up that up in 2020 with an analysis of Urban Technology Deserts, and in 2023 with an analysis of fixed-route public transit improvements within Black neighborhoods, impoverished neighborhoods, and food deserts. A 2025 update to the TJ Plan is currently underway.

### **25.05.04 – Data Analysis for Planning Partners**

*ADMINISTRATOR: Daniel Blevins, Principal Planner, William Swiatek, Principal Planner, Jacob Thompson, Senior Transportation Planner*

### **25.05.05 - Top Priority Pedestrian Segments**

*ADMINISTRATOR: Jacob Thompson, Senior Transportation Planner & William Swiatek, Principal Planner*

A regional assessment of top priority pedestrian segments was completed in 2012. The study features an update of the Prioritized Pedestrian Network, introduced in the 2030 RTP, and walkability recommendations for the region's 20 highest-scoring corridors. A matrix of appropriate funding mechanisms for implementation was provided. Staff will work with member agencies and decision-makers to help guide identified projects onto implementation. Staff updated the Prioritized Pedestrian Network in 2016 and in 2020.

### **25.05.06 – Sea-level Rise Transportation Vulnerability Assessment**

*ADMINISTRATOR: William Swiatek, Principal Planner, Jacob Thompson, Senior Transportation Planner*

A regional Sea-level Rise (SLR) transportation vulnerability assessment was finalized in 2011, in coordination with wider efforts from both state environmental agencies. The assessment profiles existing and planned transportation infrastructure (highways, railways, marinas, etc.) and projects which risk inundation at established rise levels. Staff will continue efforts to ensure the study's findings are worked into the decision-making process. Staff will support efforts to adapt to SLR in Delaware and Maryland. The SLR transportation vulnerability assessment was updated in 2020 with revised scenarios.

### **25.05.07 – Regional Transportation Performance Measure Development**

*ADMINISTRATOR: Daniel Blevins, Principal Planner, William Swiatek, Principal Planner, Jacob Thompson, Senior Transportation Planner*

**OBJECTIVE AND TASK DESCRIPTION:** Provides tracking trends of key indicators of how the transportation system is performing to improve the ability to address short- and long-term decisions based on system performance. In order to respond to demands for accountability from elected officials and the public, development of transportation and land use performance measures and prepare an annual performance report on state and regional efforts and their relation to the goals of State and MPO long range plans.

This task will provide support for decisions about transportation budgeting and appropriations and will provide a trigger for in-depth examinations of performance problems and possible corrections. It will focus on identifying and using the most credible performance measures that are reliable, relevant and regional in scope, easy to understand by a wide audience, available from public sources of data and available over a period of time. This task is to mainly cover consulting help in expediting LOS analysis, extraction of real-time ITMS data for uses in various projects. **\$60,000 is budgeted for consultant support.**

SCHEDULE: FY 2025 TASK TYPE: Recurring

PUBLIC PARTICIPATION: Updates on interagency coordination in these areas will be presented as appropriate at TAC and Council meetings or by request.

BENEFIT: Increased interagency coordination and shared staff knowledge and resources in the development of technical tools. The task also allows WILMAPCO staff to ensure that federal regulations concerning transportation models are met.

PARTICIPANTS: WILMAPCO Staff, member agency staff

TOTAL COSTS:

<b>Resource Allocation</b>	WILMAPCO	\$179,392
	CONSULTANT	\$100,000
	<b>TOTAL</b>	\$279,392
<b>Cost Allocation</b>		
<b>Total Cash Budget</b>		
FHWA DE		\$140,548
FTA DE		\$73,177
FHWA MD		\$7,144
FTA MD		\$2,644
Delaware		\$50,183
Maryland		\$1,224
New Castle County		\$2,363
Cecil County		\$1,224
City of Wilmington		\$885
<b>TOTALS</b>		\$279,392

## **MPO 25.06 – AIR QUALITY ANALYSIS AND COORDINATION**

**OBJECTIVE AND TASK DESCRIPTION:** As the Federally designated Metropolitan Planning Organization (MPO) for New Castle County, Delaware and Cecil County, Maryland, WILMAPCO is charged with coordinating regional air quality issues with member agencies and developing air quality conformity determinations on our Transportation Improvement Program (TIP) and Regional Transportation Plan (RTP) to ensure compliance with Federal air quality goals.

Staff will coordinate on regional air quality and transportation conformity issues with the assistance of the WILMAPCO Air Quality subcommittee. These coordination issues include, but are not limited to:

1. Reviewing the TIP, RTP and major amendments to the TIP and Plan for adherence to Federal guidelines and for conformity determination “triggers”.
2. Reviewing any Federal regulations or guidance for applicability to the WILMAPCO region.
3. Reviewing all technical inputs to the air quality conformity modeling process.
4. Developing and/or reviewing any public outreach activities or materials related to air quality.
5. Serving as a forum for raising or discussing any regional or local air quality issues.

The WILMAPCO Air Quality Subcommittee includes members from the Federal Highway Administration (FHWA), Federal Transit Administration (FTA), the Environmental Protection Agency (EPA), the Delaware Department of Transportation (DelDOT), the Delaware Transit Corporation (DTC), the Maryland Department of Transportation (MDOT), the Delaware Department of Natural Resources and Environmental Control (DNREC), the Maryland Department of the Environment (MDE), New Castle County, and Cecil County. This task also includes involvement in other regional air quality committees such as the Delaware Statewide Air Quality Conformity Consultation Working Group.

The WILMAPCO Air Quality Subcommittee will meet monthly (as necessary) to discuss and make recommendations to the WILMAPCO TAC on any amendments to the TIP or RTP that may trigger a conformity determination. This task also includes staff coordination on technical modeling issues related to air quality conformity determinations with the Delaware Department of Transportation (DelDOT), Maryland Department of Transportation (MDOT), the Delaware Department of Natural Resources and Environmental Control (DNREC), and the Maryland Department of the Environment (MDE)

**OUTCOME AND FINAL PRODUCT:** WILMAPCO, DelDOT, MDOT, DNREC, and MDE will undertake an interagency consultation process with local or regional offices of EPA, FHWA, and FTA on the development of the TIP, the RTP, any revisions to the preceding documents, and all required conformity determinations resulting in an air quality conforming TIP and RTP. A second result of this task will be agency coordination on other air quality issues, Federal guidance and regulations, and public outreach activities. WILMAPCO staff will produce air quality conformity determination reports for submission to USDOT and EPA when deemed appropriate by the WILMAPCO Air Quality Subcommittee and with the approval of the WILMAPCO Council.

**SCHEDULE:** FY 2025

**TASK TYPE:** Recurring

**PUBLIC PARTICIPATION:** There is a public comment period on all air quality conformity determinations developed as part of the TIP or RTP. The conformity determinations are presented to the Air Quality Subcommittee, TAC, and Council. The public is invited to attend all Air Quality Subcommittee, TAC and Council meetings during the development of the work products described above.

**BENEFIT:** Coordination between member agencies on air quality issues and transportation planning documents that conform to Federal clean air standards.

**ADMINISTRATOR:** *Tigist Zegeye, Executive Director and William Swiatek, Principal Planner*

**PARTICIPANTS:** WILMAPCO Staff, Air Quality Subcommittee, Member Agencies (including Municipalities), and the public.

TOTAL COSTS:

<b>Resource Allocation</b>	WILMAPCO	\$54,408
	CONSULTANT	\$0
	<b>TOTAL</b>	\$54,408
<b>Cost Allocation</b>		<b>Total Cash Budget</b>
FHWA DE		\$27,370
FTA DE		\$14,250
FHWA MD		\$1,391
FTA MD		\$515
Delaware		\$9,773
Maryland		\$238
New Castle County		\$460
Cecil County		\$238
City of Wilmington		\$172
<b>TOTALS</b>		\$54,408

## **MPO 25.07 – NEW FEDERAL REGULATION COMPLIANCE**

As the federally designated metropolitan planning organization for the region, WILMAPCO must respond to the planning requirements of two federal laws: the Bipartisan Infrastructure Law (BIL) and the Clean Air Act Amendments of 1990 (CAAA). The Bipartisan Infrastructure Law is the largest long-term investment in infrastructure and economy in the Nation's history. It provides \$550 billion over fiscal years 2022 through 2026 in new Federal investment in infrastructure, including in roads, bridges, and mass transit, water infrastructure, resilience, and broadband.

The Bipartisan Infrastructure Law provides the basis for FHWA programs and activities through September 30, 2026. It makes a once-in-a-generation investment of \$350 billion in highway programs. This includes the largest dedicated bridge investment since the construction of the Interstate Highway System. Under this legislation, the MPO is a partner in the planning for the use of all federal transportation funds allocated within their region. The BIL also requires the MPO to produce and oversee a Transportation Improvement Program (TIP), the region's short-range capital investment plan, which must be consistent with and serve to implement the region's Long-Range Plan. The TIP prioritizes the region's transportation projects within the constraints of federal funding that Delaware and Maryland can reasonably expect to receive within four years.

New programs under the Bipartisan Infrastructure Law focus on key infrastructure priorities including rehabilitating bridges in critical need of repair, reducing carbon emissions, increasing system resilience, removing barriers to connecting communities, and improving mobility and access to economic opportunity.

Many of the new programs include eligibility for local governments, Metropolitan Planning Organizations (MPOs), Tribes, and other public authorities, allowing them to compete directly for funding.

The Metropolitan Planning Regulations promulgated from the Bipartisan Infrastructure Law identify **ten** planning factors that must be considered in the metropolitan planning process. The ten planning factors listed below are integrated within the tasks of this Unified Planning Work Program.

- Support the **economic vitality** of the metropolitan area, especially by enabling global competitiveness, productivity, and efficiency.
- Increase the **safety** of the transportation system for motorized and non-motorized users.
- Increase the **security** of the transportation system for motorized and non-motorized users.
- Increase **accessibility and mobility** of people and freight.
- Protect and enhance the **environment**, promote **energy conservation**, improve the **quality of life**, and promote **consistency** between transportation improvements and state and local planned **growth and economic** development patterns.
- Enhance the **integration and connectivity** of the transportation system, across and between modes, for people and freight.
- Promote efficient **system management and operation**.
- Emphasize the **preservation** of the existing transportation system.
- Improve the **resiliency and reliability** of the transportation system and reduce or mitigate stormwater impacts of surface transportation.
- Enhance **travel and tourism**.

The Metropolitan Planning Regulations also require that MPOs with a population of more than 200,000 undergo a certification review conducted jointly by the Federal Highway Administration and the Federal Transit Administration at least every four years to determine if their metropolitan transportation planning process meets the federal planning requirements. Federal certification of the planning process is a prerequisite to the approval of federal funding for transportation projects in their area. WILMAPCO underwent the site-visit portion of the review in November 2022 and received the Final Certification Review Report in March 2024. With the preparation and distribution of the Final Report, the FHWA and FTA certified WILMAPCO's metropolitan transportation planning process fully with no corrective action.

The requirements of the Clean Air Act Amendments (CAAA) establish a program and set a timetable for improving the nation's air quality. The Wilmington area has been classified as a non-attainment area for ground-level ozone and portions of the region are in non-attainment of the fine particulate matter standards. The region must attain or continue to maintain the mandated air quality standards for these factors. Although the responsibility for attaining the standards falls directly on the states, WILMAPCO is responsible for a key role in developing many of the programs relating to air quality attainment or maintenance. The projects in the region's TIP and the Long-Range Plan must conform to the states' air quality implementation plans. These projects must not lead to any further violation of the federal clean air standards or impede the region's progress toward meeting those standards.

In addition, WILMAPCO will continue to work with our partner agencies to address the 2021 Planning Emphasis Areas identified by FHWA and FTA. These include:

- Tackling the Climate Crisis – Transition to a Clean Energy, Resilient Future
- Equity and Justice40 in Transportation Planning
- Complete Streets
- Public Involvement
- Strategic Highway Network (STRAHNET)/U.S. Department of Defense (DOD) Coordination
- Planning and Environment Linkages (PEL)
- Data in Transportation Planning

SCHEDULE: FY 2025

TASK TYPE: Recurring

PUBLIC PARTICIPATION: Updates and information on this task will be made available at the PAC, TAC, and WILMAPCO Council meetings, and upon request.

BENEFIT: The task promotes increased interagency coordination and better integration of its planning efforts into the comprehensive MPO planning process.

ADMINISTRATOR: Tigist Zegeye, Executive Director and Staff

PARTICIPANTS: WILMAPCO Staff, Member Agency Staff and other Stakeholder Groups

TOTAL COSTS:

<b>Resource Allocation</b>	WILMAPCO	\$68,010
	CONSULTANT	\$0
	<b>TOTAL</b>	\$68,010
<b>Cost Allocation</b>		
<b>Cost Allocation</b>		<b>Total Cash Budget</b>
FHWA DE		\$34,212
FTA DE		\$17,813
FHWA MD		\$1,739
FTA MD		\$644
Delaware		\$12,216
Maryland		\$298
New Castle County		\$575
Cecil County		\$298
City of Wilmington		\$212
<b>TOTALS</b>		\$68,010

**MPO 25.08 – GOODS MOVEMENT PLAN IMPLEMENTATION**

OBJECTIVE AND TASK DESCRIPTION: As an MPO, WILMAPCO is bound by federal transportation legislation to be involved with the integration and connectivity of freight, across and between modes. The collection of data and its analysis will serve to broaden WILMAPCO’s understanding of the logistic, safety and economic issues that surround the movement of goods throughout the region. The 2017 Statewide Freight Plan summarized current and future freight planning and transportation needs to enhance freight and goods movement and related economic opportunities on the 14-county tri-state area of Delmarva. WILMAPCO will work to meet the need for multimodal freight planning collaboration within regional jurisdictions and across economic corridors to enhance mobility at the local, state, multi-state, and national level. Also, it will begin to seek ways to implement the goals of the freight plan and begin a system to monitor changes along the freight corridors identified by the plan.

**25.08.01 – First/Final Mile Freight Network Plan Update-New Castle County**

The purpose of this task is to support DelDOT efforts to perform a two-part effort in addressing localized freight impacts around the County’s first/final mile freight connections. These connections are defined as smaller classification roadways that link businesses to state and national highway networks. The first part will be a technical update to the 2021 1<sup>st</sup>/Final mile Freight Network development study and will reassess the network to incorporate any recent demographic, policy, or traffic conditions. The second part will perform a series of tasks outlined in the 2021 study. **\$100,000 is budgeted for consultant support**

SCHEDULE: FY 2025

TASK TYPE: Recurring

PUBLIC PARTICIPATION: Meetings with freight transport companies, as well as public meetings and the annual freight summit and subsequent task for meetings, will be held throughout the goods movement planning process to ensure that the significant issues for both the private and public sectors are addressed. Updates and information on this task will be made available at the PAC, TAC, and WILMAPCO Council meetings, and upon request.

BENEFIT: The examination of the economic and safety impacts of goods movement will allow WILMAPCO planners to better understand both the economic and safety impacts surrounding trucks that travel the region’s roadways, as well as freight rail, barge and pipeline. By evaluating mode and route choices, WILMAPCO can formulate a means of improving the efficiency and effectiveness of the overall goods movement system in the region.

ADMINISTRATOR: *Daniel Blevins, Principal Planner, Jacob Thompson, Transportation Planner, William Swiatek, Principal Planner*

PARTICIPANTS: WILMAPCO Staff, member agencies, DVRPC

TOTAL COSTS:

<b>Resource Allocation</b>	WILMAPCO	\$96,702
	CONSULTANT	\$100,000
	<b>TOTAL</b>	<b>\$196,702</b>
<b>Cost Allocation</b>		<b>Total Cash Budget</b>
FHWA DE		\$98,951
FTA DE		\$51,519
FHWA MD		\$5,030
FTA MD		\$1,862
Delaware		\$35,331
Maryland		\$861
New Castle County		\$1,664
Cecil County		\$861
City of Wilmington		\$623
<b>TOTALS</b>		<b>\$196,702</b>



## **MPO 25.09 – REGIONAL COORDINATION**

**OBJECTIVE AND TASK DESCRIPTION:** To promote the coordination of government and agency planning and programming activities, and to address policy issues that are important to the efficient operation of the transportation system in the WILMAPCO region, WILMAPCO serves as a forum for discussion, policy development, and regional coordination on key issues. Staff acts to provide forums and facilitate discussion of regional issues that might not otherwise occur given different state, local, and agency jurisdictions in the region. To address transportation issues that are generated by transportation investments, growth patterns, and policy changes outside of the WILMAPCO region, WILMAPCO serves to promote coordination with bordering governments and regional planning agencies. Regular coordination promotes awareness and education on regional transportation system and growth issues and encourages the development of multi-regional policies and solutions that are required to address significant regional issues.

### **25.09.01 – Intra-Regional Coordination**

*ADMINISTRATOR: Tigist Zegeye, Executive Director and Staff*

Transportation issues having impacts on both counties in the region may be raised from time to time. These issues will be identified and studied, and recommendations will be developed to address the issues and/or an action plan will be recommended.

### **25.09.02 – Inter-Regional Agency Coordination**

*ADMINISTRATOR: Tigist Zegeye, Executive Director, Daniel Blevins, Principal Planner, Jacob Thompson, Senior Transportation Planner*

To promote ongoing coordination between planning agencies, municipalities, environmental agencies and transportation departments adjacent to and impacting the WILMAPCO region, WILMAPCO staff will regularly pursue coordination opportunities with appropriate agencies. This will include the sharing of information on work programs, coordination meetings on cross border studies and other issues, and the review and discussion of regional transportation planning issues. Information regarding the transportation plans and activities of adjacent MPOs and other transportation planning commissions or organizations will be gathered and reviewed in order to determine its impact, if any, relative to plans in place for the WILMAPCO region as part of an update to the Inter-Regional report. This work also supports FHWA'S Every Day Counts goals for regional models of cooperation.

### **25.09.03 – Livability and Sustainability Initiatives**

*ADMINISTRATOR: Tigist Zegeye, Executive Director, William Swiatek, Principal Planner, Jacob Thompson, Senior Transportation Planner*

Staff will coordinate with agencies both within and beyond its borders to address growing concerns surrounding livable communities, linking health and transportation, and environmental sustainability. Beyond our sea-level rise transportation vulnerability assessment, this work includes collaboration to advance the goals of the Partnership for Sustainable Communities and our continued support in efforts to promote livability, sustainability, and the reduction of greenhouse gas emissions. Specific work includes supporting coordinated community development efforts and the development of the region's electric vehicle public infrastructure. Staff also participates in coalitions working to advance community health and safety including Healthy Kids Delaware, the Safe Kids Coalition, Healthy Communities Delaware, Wilmington Health Planning Council, Resilient and Sustainable Communities League, EPA Region 3's Mid-Atlantic Climate Mitigation Network, and the Delaware Clean Cities Coalition.

### **25.09.04– Other**

*ADMINISTRATOR: Tigist Zegeye, Executive Director*

Other regional coordination tasks as identified.

**OUTCOME AND FINAL PRODUCT:** The development of a statement of issues, impacts, and conclusions, recommendations for further study, and an action plan to pursue resolution of identified issues, impacts and recommendations.

**SCHEDULE:** FY 2025

**TASK TYPE:** Recurring as issues are identified.

**PUBLIC PARTICIPATION:** Updates and information on this task will be made available at the PAC, TAC, and WILMAPCO Council meetings, and upon request. In addition, specialized public outreach may occur if deemed appropriate.

**BENEFIT:** The task allows WILMAPCO to address a bi-state and regional coordination issue affecting the transportation system and regional economic development and equity issues.

PARTICIPANTS: WILMAPCO Staff, member agencies, local officials

TOTAL COSTS:

<b>Resource Allocation</b>	WILMAPCO	\$131,104
	CONSULTANT	\$0
	<b>TOTAL</b>	\$131,104
<b>Cost Allocation</b>		
<b>Cost Allocation</b>		<b>Total Cash Budget</b>
FHWA DE		\$65,952
FTA DE		\$34,338
FHWA MD		\$3,352
FTA MD		\$1,241
Delaware		\$23,548
Maryland		\$574
New Castle County		\$1,109
Cecil County		\$574
City of Wilmington		\$415
<b>TOTALS</b>		\$131,104

## **MPO 25.10 – RTP IMPLEMENTATION**

The WILMAPCO 2050 Regional Transportation Plan (RTP): 2024 Update, adopted on March 9, 2024, identifies the region's long-term transportation needs and the projects and activities which seek to address them. The RTP extends at least two decades into the future, and the projects it calls for are financially reasonable and meet air quality standards. **\$250,000 is budgeted for consultant support, including FY 2024 carryover funds amended into the UPWP.**

The Goals and Objectives arrived at by consensus through the long-range plan updates are:

❖ **Support Sustainable Economic Development and Goods Movement**

➤ *Objectives:*

- Maximize our Investments
- Develop Effective Transportation networks
- Plan for Energy Security and Resilience

❖ **Efficiently Transport People**

➤ *Objectives:*

- Improve System Performance
- Promote Accessibility and Connectivity
- Engage the Public Via an Open Involvement Process

❖ **Improve Quality of Life**

➤ *Objectives:*

- Protect the Public Health and Safety
- Promote Active Transportation
- Ensure Transportation Choice and Equity
- Preserve Natural and Cultural Resources

**OUTCOME AND FINAL PRODUCT:** Implemented actions that will help to achieve the goals of WILMAPCO's 2050 RTP.

**SCHEDULE:** FY 2025

**TASK TYPE:** Non-Recurring

**PUBLIC PARTICIPATION:** The task involved outreach to the members of the general public, through regular occurring and additional public outreach forums.

**BENEFIT:** Implementation of these actions assisted WILMAPCO in evaluating policy required to fully implement the RTP and engaged key stakeholders in a necessary discussion of public policy and planning tools for the region.

**ADMINISTRATOR:** Tigist Zegeye, Executive Director and Staff

**PARTICIPANTS:** WILMAPCO Staff, member agencies, local officials, general public, other stakeholder groups

TOTAL COSTS:

<b>Resource Allocation</b>	WILMAPCO	\$25,912
	CONSULTANT	\$250,000
	<b>TOTAL</b>	<b>\$275,912</b>
<b>Cost Allocation</b>		<b>Total Cash Budget</b>
FHWA DE		\$138,798
FTA DE		\$72,265
FHWA MD		\$7,055
FTA MD		\$2,611
Delaware		\$49,558
Maryland		\$1,208
New Castle County		\$2,334
Cecil County		\$1,208
City of Wilmington		\$874
<b>TOTALS</b>		<b>\$275,912</b>

## **MPO 25.11 – SUBREGIONAL STUDIES AND COORDINATION**

This task allows for the coordination of transportation and land use planning activities by working with local and state governments and community groups. WILMAPCO either takes the lead or participates in the development and scoping of a variety of plans and studies that further the implementation of the RTP. Studies we expect to administer during fiscal year 2024 include the following:

### **25.11.01 – Safe Routes to Schools Planning Assistance**

**OBJECTIVE AND TASK DESCRIPTION:** This project will facilitate and promote the safe travel of children to school, particularly by foot and bicycle. WILMAPCO will work with DOTs to publicize the program and to identify potential schools and will coordinate with schools and DOTs to examine existing and potential routes to school and identify deficiencies in the network that discourage safe walking and biking. Strategies to remedy these deficiencies (sidewalks, speed reduction, pedestrian and bicycle crossing improvements, bikeways, etc.) will be identified. WILMAPCO will work with the state DOTs, counties, municipalities, and school districts to design, program and implement public infrastructure improvements in tandem with bicycle and pedestrian safety education programs.

**OUTCOME AND FINAL PRODUCT:** Work will assist schools in developing needed plans to apply for Safe Routes to School implementation funding.

**SCHEDULE:** FY 2025

**TASK TYPE:** Non-recurring

**PUBLIC PARTICIPATION:** School children, parents, school districts and staff, state DOTs, municipalities, residents, transportation agencies and operators.

**BENEFIT:** To improve travel safety, reduce traffic congestion, improve air quality, reduce school transportation costs, and promote healthy, active living.

**ADMINISTRATOR:** *William Swiatek, Principal Planner, Jacob Thompson, Senior Transportation Planner*

### **25.11.02 – Scenic and Historic Byways Planning Assistance**

**OBJECTIVE AND TASK DESCRIPTION:** WILMAPCO, in partnership with DeIDOT, MDOT, New Castle County, Cecil County and the local scenic byway development committees, will assist with the Scenic Byway designation process by providing technical and public outreach assistance.

**OUTCOME AND FINAL PRODUCT:** The final products will be reports detailing resources in the corridors and characterizing the threats endangering the long-term viability of these important resources. This will include a review of zoning and land use plans for future growth, identification of current and future local and state planned infrastructure investments and transportation level of service.

**SCHEDULE:** FY 2025

**TASK TYPE:** Non-recurring

**PUBLIC PARTICIPATION:** These studies will require extensive public involvement. WILMAPCO and its partners will seek the input of residents, business owners, environmental and historic preservation organizations, and tourist attractions in the corridors as well as other interested stakeholders. WILMAPCO seeks public involvement by publicizing workshops and meetings. The publicity includes notices in area newspapers, flyers posted at area libraries, and direct mailings to interested groups, civic associations, individuals, and others.

**BENEFIT:** These studies will help to implement the RTP strategies to preserve natural and historic resources, improve commerce, and link land use and transportation.

**ADMINISTRATOR:** *Heather Dunigan, Principal Planner*

**PARTICIPANTS:** WILMAPCO staff, the Scenic Byway Management Committees established for each targeted scenic byway, New Castle County, DeIDOT, Cecil County, MDOT

### **25.11.03 – Walkable Community Workshop Program**

**OBJECTIVE AND TASK DESCRIPTION:** Walkable Community Workshops are interactive events that focus attention on making communities safer and easier to walk in. Workshops will provide information on how we can turn our communities into the kind of pedestrian-friendly places we all like to experience.

**OUTCOME AND FINAL PRODUCT:** During workshops, participants will learn about the elements of a walkable community and solutions to common issues. Instructors then lead a walking tour of the study area and emphasize

seeing the community from the perspective of a pedestrian. Participants identify specific measures to improve conditions for pedestrians and priority actions they can take to create a more walkable community.

SCHEDULE: FY 2025

TASK TYPE: Non-recurring

PUBLIC PARTICIPATION: Any city, town, unincorporated community, or corridor where people want a safer, more attractive route for walking. Workshops bring together residents, elected officials, advocates, public agency staff, public health practitioners, educators, planners and engineers.

BENEFIT: Educate community leaders about the needed tools to advocate and plan for walkable communities

ADMINISTRATOR: *Heather Dunigan, Principal Planner, William Swiatek, Principal Planner, Jacob Thompson, Senior Transportation Planner*

#### **25.11.04—Coordination with the Delaware Department of Transportation (DeIDOT)**

1. Augustine Cutoff Corridor Bicycle and Pedestrian Network Improvements, Phase 2

WILMAPCO STAFF PARTICIPANT: *David V. Gula, Principal Planner, Daniel Blevins, Principal Planner, Heather Dunigan, Principal Planner*

This study follows the Phase 1 study which led to a pathway/sidewalk improvement concept for Augustine Cutoff from Lovering Ave. to Cantera Ave. There is a need to develop a concept for the entire corridor to function more safely for all modes. The study will continue to develop a program of pedestrian and bicycle improvements from Cantera Ave to W Park Dr and will continue the public engagement effort that was begun with Phase 1. The goal is to develop concepts for the road from a more holistic perspective (bike/ped facilities, intersection improvements, traffic calming, typical sections, aesthetics) and develop a concept for a capital project.

WILMAPCO will work cooperatively with Delaware Department of Transportation, Delaware Office of State Planning Coordination, Delaware Transit Corporation, New Castle County Department of Land Use, the City of Wilmington and State and Local elected officials. **\$100,000 is budgeted for consultant support.**

2. Rocky Run Pathway Underpass Feasibility Study

WILMAPCO STAFF PARTICIPANT: *David V. Gula, Principal Planner, Daniel Blevins, Principal Planner, Heather Dunigan, Principal Planner*

This study will assess the feasibility for closing one of the three cells of the Rocky Run culvert under US202 (bridge #1-024), near Widener Law School, and converting it to a shared-use pathway. This will also require the realignment of Rocky Run to maintain stream and stormwater flow through the remaining two cells, as was described in DeIDOT's completed hydrology report. This new pathway must also be connected to nearby pedestrian facilities and networks of low stress cycling facilities. The study must include a design concept developed with extensive public outreach, and will also include cost estimates, any necessary phasing, and the project delivery pathways.

WILMAPCO will work cooperatively with Delaware Department of Transportation, Delaware Office of State Planning Coordination, Delaware Transit Corporation, New Castle County Department of Land Use, the City of Wilmington and State and Local elected officials. **\$100,000 is budgeted for consultant support.**

#### **25.11.05 – Coordination with the Maryland Department of Transportation (MDOT)**

1. Maryland I-95 Corridor Study

WILMAPCO STAFF PARTICIPANT: *Tigist Zegeye, Executive Director*

Staff will participate in an analysis of transportation needs including roadway pricing/value pricing alternatives for I-95 in Cecil County. MDOT contact: Tyson Byrne

#### **25.11.06 – Coordination with the Cecil County**

1. Cecil County Transit Coordination

WILMAPCO STAFF PARTICIPANT: *Heather Dunigan, Principal Planner, David Gula, Principal Planner*

Working as a member of the Cecil County Transit Coordinating Council, staff assists with analysis to assist with transit planning and development in Cecil County. Work includes participation in the Transit Development Plan (TDP), a five-year guide that identifies needed transit services and facilities.

2. Cecil County Strategic Highway Safety Plan (SHSP)

WILMAPCO STAFF PARTICIPANT: *Heather Dunigan, Principal Planner*

Staff will assist Cecil County in the development, evaluation, and updating of the SHSP. Developed by a committee of local, state, regional, and federal agencies, the SHSP identifies actions that can be taken at the local level to

reduce the frequency and severity of motor vehicle crashes, including those involving bicyclists and pedestrians, which occur on roadways in Cecil County.

### 3. MD Route 272 Corridor Study

*WILMAPCO STAFF PARTICIPANT: William Swiatek, Principal Planner, Jacob Thompson, Senior Transportation Planner*

This study will Evaluate the existing traffic that uses MD 272 between Joseph Biggs Memorial Highway (MD 274) through to the intersection with Shady Beach & Hances Point Roads. The corridor has a mix of travelers, including residential, commuter, commercial, and recreational. The intersection of uses within a municipality provides (Town of North East), potentially, many opportunities for safety improvements of a varied nature which works towards the Improve Quality of Life Goal. The current situation is a barrier for sustainable economic development in a center and core Transportation Investment Area. The study will provide a route forward for sustainable economic development, pedestrian safety, and good movement through the development of a road system that maximizes an investment in the area, supports the examination of additional sources of funding, and plans for future sea level rise, and nuisance, chronic flooding.

This study will identify ways to manage and mitigate congestion in this area. Opportunities to integrate low stress nonmotorized transportation facilities; including potential connections to the East Coast Greenway where it intersects with downtown North East to the northern side of US Route 40 providing more opportunities for a pedestrian network.

WILMAPCO will work cooperatively with Cecil County (Division of Planning and Zoning, Town of North East, MD, Maryland Department of Transportation, and community groups. **\$125,000 is budgeted for consultant support.**

### **25.11.07 – Coordination with the City of Wilmington**

#### 1. Wilmington Initiatives Public Outreach and Management Assistance & Interagency Coordination

*WILMAPCO STAFF PARTICIPANT: Tigist Zegeye, Executive Director, David Gula, Principal Planner*

The City of Wilmington (City) plays a key role in the region to promote development of cost-effective and user-friendly transportation systems. Effective outreach and proper coordination are essential components in the process of developing workable solutions to transportation problems. Implementation of this work task will assist with achieving proper intergovernmental coordination and promoting meaningful public/private communication. In particular, this effort will focus on the budgetary status of various initiatives, as it relates to updating our long-range plan. A consultant will be retained to attend, coordinate, and provide timely follow-through in support of the various initiatives. Also, up-to-date public information materials will be developed to clearly summarize the status of the various transportation projects in the City, in support of the WILMAPCO Public Outreach program and efforts to address important Transportation Justice concerns and Access to Jobs issues.

Effective coordination of public outreach activities, in concert with the design development process of the Wilmington Initiatives committees (Management, Technical, Steering, and Partners), is essential to achieving the RTP goal of linking land use and transportation activities. The Wilmington Initiatives support a variety of cultural and economic developments in an area where population and employment densities can support relatively cost-effective bus and rail transit. Inclusion of grass-roots public participation in the efforts to update the long-range plan will be critically needed to promote quality-of-life improvements, such as installing pedestrian-level street lighting to enhance safety and security, while allowing growth of street trees to reinforce the aesthetic and environmental assets of the City. A separate consultant will be retained to complete concept plans for smaller projects that are designed in concert with community input.

This study coordinates Wilmington's development strategies and provides the specific information needed to make the concepts in the WILMAPCO RTP work in practice. This task is a continuation of work begun in FY 1996.

Objectives of this element of the task are:

1. To provide a balance between the requirements for local and regional access within the corridor for all modes including walking, bicycling, transit and private vehicles
2. To promote economic development related to community objectives
3. To improve the visual quality of the corridors for residents, workers and visitors in keeping with community character
4. To enhance safety for all modes of travel and environmental quality within the corridors
5. To support coherent and viable neighborhoods in sync with other community goals
6. To assist in prioritizing transportation projects for the CTP and TIP

Participants include WILMAPCO Staff, City of Wilmington, DeIDOT, DART, a Consultant and the Community.

Coordination with other ongoing planning studies and design projects, such as the Citywide Environmental Enhancement projects conducted by the City and the Christina Waterfront Projects being conducted by DeIDOT and RDC, will be an integral part of this task. **\$20,000 is budgeted for consultant support.**

1. Neighborhood Planning Support

*WILMAPCO STAFF PARTICIPANT: William Swiatek, Principal Planner, and David Gula, Principal Planner*  
Staff will provide technical guidance and support on neighborhood planning and community development efforts across the City of Wilmington including supporting the South Wilmington Planning Network (SWPN), Westside Grows Together, Eastside Rising, the Wilmington Community Advisory Council, and other neighborhood planning efforts, such as the implementation of the Southbridge Neighborhood Action Plan.

**25.11.07– Coordination with the City of Newark**

1. Newark Bicycle Plan Update

*WILMAPCO STAFF PARTICIPANT: Heather Dunigan, Principal Planner*

The Newark Bicycle Plan will update the status of recommendations from the 2014 Newark Bicycle Plan, incorporate recommendations from the Newark TID, and include new recommendations based on national best practices and stakeholder input. WILMAPCO will work cooperatively with the City of Newark, DeIDOT, New Castle County, Bike Newark, and other community groups, and planning will include a variety of public outreach opportunities.

**25.11.08– Coordination with the municipalities and unincorporated communities**

*WILMAPCO STAFF PARTICIPANT: Heather Dunigan, Principal Planner*

WILMAPCO assist municipalities and unincorporated communities on planning activities including assistance with comprehensive development plans, transportation plans, public outreach, data and mapping, and master planning.

**25.11.09 – Coordination with New Castle County**

1. SR 2, Kirkwood Highway Corridor Land Use and Transportation Plan

*WILMAPCO STAFF PARTICIPANTS: Dan Blevins, Principal Planner and David Gula, Principal Planner*

The goal is to create a 20-year land use and transportation plan for the corridor. Data analysis and community engagement will lead to a series of transportation and land use recommendations that will support sustainable growth and redevelopment along the corridor, along with significantly improved multimodal access and connectivity. The length of the study area will stretch roughly between SR 72 to SR 100.

WILMAPCO will work cooperatively with Delaware Department of Transportation, Delaware Economic Development Office, Delaware Office of State Planning Coordination, Delaware Transit Corporation, New Castle County Department of Community Services and New Castle County Department of Land Use, and the Town of Elsmere. **\$200,000 is budgeted for consultant support.**

2. New Castle County Comprehensive Plan and Regional Transportation Plan Strategic Action Plan

*WILMAPCO STAFF PARTICIPANTS: Dan Blevins, Principal Planner and David Gula, Principal Planner*

The Strategic Action Plan will provide guidance for New Castle County, WILMAPCO, and DeIDOT in implementing the New Castle County Comprehensive Plan and the Regional Transportation based on best practices across the country. The plan will explore innovative initiatives to achieve the aspirations of those plans.

During the production of the Strategic Action Plan the chosen consultant will evaluate opportunities as Major Land Development plans are submitted to the County and DeIDOT to make sure that opportunities to implement the Regional Transportation Plan and County Comprehensive Plan are not foreclosed on.

WILMAPCO will work cooperatively with New Castle County Government, Delaware Department of Transportation, and Delaware Transit Corporation. **\$100,000 is budgeted for consultant support.**

**25.11.12 – Other**

*ADMINISTRATOR: Tigist Zegeye, Executive Director*

Other sub-regional study coordination tasks as identified.

OUTCOME AND FINAL PRODUCT: Recommendations for implementation and RTP, TIP and UPWP amendments, where appropriate.

SCHEDULE: FY 2025

TASK TYPE: Non-recurring



**PUBLIC PARTICIPATION:** The study process requires extensive public involvement. Although the Steering Committees for various studies and planning efforts represent the public and it is involved in the evaluation and recommended selection of strategies, we cannot understate the role of individual members of the public, particularly those most affected by the recommendations. We also conduct legislative briefings for area elected officials. WILMAPCO seeks public involvement by publicizing workshops and meetings. The publicity includes notices in area newspapers, flyers posted at area libraries, and direct mailings to interested groups, civic associations, individuals, and others. The members of Steering Committees have also taken responsibility of informing those individuals they represent of upcoming opportunities for public comment.

**BENEFITS:** Coordinated transportation and land use plans for our communities, supports WILMAPCO's goals and implements the 2050 RTP. Particularly, these studies and plans will link land use and transportation and seek to improve quality of life, strengthen our existing communities and improve intergovernmental relations between the state and local levels of government.

**PARTICIPANTS:** Each major WILMAPCO study is directed in partnership by Management Committees of Senior officials from WILMAPCO, DOT(s), County (ies), and affected municipalities. The Management Committee responsibilities include overall direction and management of the work effort. A Technical Committee, made up of staff planners and engineers from the above agencies, provides technical review of all study data and products. The Technical Committee also provides input and carries out technical analysis as requested by the Management Committee. The Steering Committees include civic association representatives, residents, builders and developers, businesses, area elected officials, Transportation Management Association of New Castle County, and other interested groups. The steering committee provides input to the study process at periodic meetings and review materials for public workshops and meetings before such events. Smaller studies may include a smaller participating and management structure.

Other responsible member agencies, as noted above, will determine their own study process and participants.

**TOTAL COSTS:**

<b>Resource Allocation</b>	WILMAPCO	\$272,721
	CONSULTANT	\$645,000
	<b>TOTAL</b>	\$917,721
<b>Cost Allocation</b>		
<b>Cost Allocation</b>		<b>Total Cash Budget</b>
FHWA DE		\$461,661
FTA DE		\$240,365
FHWA MD		\$23,467
FTA MD		\$8,685
Delaware		\$164,837
Maryland		\$4,019
New Castle County		\$7,763
Cecil County		\$4,019
City of Wilmington		\$2,907
<b>TOTALS</b>		\$917,721

**MPO 25.12 – TRANSPORTATION IMPROVEMENT PROGRAM (TIP)**

OBJECTIVE AND TASK DESCRIPTION: Provides for the amendment of the FY 2025-2028 TIP and development of the FY 2027-2029 TIP. The TIP is the agreed upon list of priority projects for the region and signifies a consensus of what is expected to be built or carried out with estimated costs and schedules. It is based on available funding and works toward achieving regional goals for healthier air quality. The TIP will be developed according federal requirements in cooperation with Maryland and Delaware departments of transportation and public transit providers.

<b>Developing the Transportation Improvement Program Process and Schedule – Summary</b>	
<b><u>Amending the TIP – Summary</u></b>	
The TIP is amended each year following the approval of matching funds through the Bond Bill, as well as when needed throughout the year due to project changes. Many amendments necessitate additional public outreach.	
<b>July- September</b>	<ul style="list-style-type: none"><li>• TIP &amp; Air Quality Conformity released for public comment July– September</li><li>• TIP Public Meeting</li><li>• Revise TIP based on public comments</li><li>• TAC/PAC recommendation for adoption</li><li>• Council adoption of TIP as amended</li></ul>
<b>Amend as needed</b>	<ul style="list-style-type: none"><li>• Public comment period extending at least 30 days will be scheduled with amendments as needed.</li></ul>

OUTCOME AND FINAL PRODUCTS: Implementation of projects in the Regional Transportation Plan via the TIP. A TIP that is consistent with the 2050 RTP and reflects the transportation needs of the region.

SCHEDULE: The FY 2025-2028 TIP will be adopted in May 2024 by the WILMAPCO Council and forwarded to FHWA, FTA, EPA, DeIDOT and MDOT.

TASK TYPE: Recurring

PUBLIC PARTICIPATION: WILMAPCO will hold at least two public meetings at different stages of the TIP development: (1) to present a candidate list of new projects and (2) to present a final draft TIP. WILMAPCO will also advertise a 30-day public notice for the draft TIP and air quality conformity analysis.

BENEFIT: A four-year document that provides the program for the implementation of the Regional Transportation Plan.

ADMINISTRATOR: *Tigist Zegeye, Executive Director, Heather Dunigan, Principal Planner, Jacob Thompson, Senior Transportation Planner*

PARTICIPANTS: Public, WILMAPCO, Member Agencies

TOTAL COSTS:

<b>Resource Allocation</b>	WILMAPCO	\$80,897
	CONSULTANT	\$0
	<b>TOTAL</b>	\$80,897
<b>Cost Allocation</b>		
<b>Cost Allocation</b>		<b>Total Cash Budget</b>
FHWA DE		\$40,695
FTA DE		\$21,188
FHWA MD		\$2,069
FTA MD		\$766
Delaware		\$14,530
Maryland		\$354
New Castle County		\$684
Cecil County		\$354
City of Wilmington		\$256
<b>TOTALS</b>		\$80,897

## **MPO 25.13 – MONITORING OF SUBREGIONAL STUDIES**

OBJECTIVE AND TASK DESCRIPTION: To work with member agencies and the public to develop and coordinate the implementation of adopted transportation and comprehensive development plans that are significant to the region in the attainment of the goals of the 2050 Regional Transportation Plan. Under this task, WILMAPCO staff provides member agencies technical, or coordination assistance as requested by the implementing agency. The implementing agency will take the lead role in the specific sub-tasks described below.

WILMAPCO tracks the extent of the implementation of these prior studies through the Regional Progress Report ([www.wilmapco.org/regional-progress-report](http://www.wilmapco.org/regional-progress-report)). Completed subregional study reports may be found at [www.wilmapco.org/plans-and-reports](http://www.wilmapco.org/plans-and-reports) or are available by contacting WILMAPCO.

### **25.13.01 – City of New Castle**

#### **1. City of New Castle Comprehensive Plan Update**

*WILMAPCO STAFF PARTICIPANT: Heather Dunigan, Principal Planner, William Swiatek, Principal Planner*

Staff will work with the City of New Castle to implement elements of the Comprehensive Plan update.

#### **2. 2022 City of New Castle Transportation Plan**

*WILMAPCO STAFF PARTICIPANT: Heather Dunigan, Principal Planner and Jake Thompson, Senior Transportation Planner*

WILMAPCO, the City of New Castle, DelDOT, and community stakeholders developed the City of New Castle Transportation Plan which included recommendations to improve the multimodal transportation network, provide connectivity to communities and trails, enhance health and livability, reduce illegal truck traffic, improve safety, address flooding and sea-level rise impacts on land use and access to major transportation corridors, improve gateways to the historic city, and address parking needs. WILMAPCO will work with the planning team to monitor and assist with implementation of the Plan.

### **25.13.02 – Mobility Friendly Design Standards**

*WILMAPCO STAFF PARTICIPANT: Heather Dunigan, Principal Planner, Daniel Blevins, Principal Planner*

Mobility Friendly Design Standards have been completed in Middletown, Chesapeake City, Rising Sun, Perryville, Port Deposit, Cecilton and North East. Staff will work with these towns, community leaders, and member agencies to implement their mobility friendly design standards.

### **25.13.03 – City of Newark Planning**

*WILMAPCO STAFF PARTICIPANT: Heather Dunigan, Principal Planner, David Gula, Principal Planner*

Staff will continue to work with involved member agencies to implement the short -and long-term recommendations of the Newark plans, including monitoring implementation of the Cleveland Avenue Task Force, Newark Traffic Calming Plan, Newark Transportation Plan, Newark Transit Study, and Newark Bicycle Plan. Staff will also serve on the Newark Traffic Committee.

#### **1. Newark Sustainability Plan**

*WILMAPCO STAFF PARTICIPANT: William Swiatek, Principal Planner*

WILMAPCO will support the City of Newark's efforts to implement its Sustainability Plan. The plan identified actions Newark can reduce its carbon footprint. These include advancing cleaner forms of transportation and establishing better land redevelopment practices.

#### **2. Newark-Area Transit Study**

*WILMAPCO STAFF PARTICIPANT: Heather Dunigan, Principal Planner*

Project collected and analyzed data and conducted public outreach to assess and improve transit services and coordination in Newark. Working with DTC, City of Newark, Cecil Transit and the University of Delaware, the plan recommended improved route design, timing/scheduling changes, and other recommendations to improve transit operations and service in the Newark area.

#### **3. Newark Regional Transportation Center**

*WILMAPCO STAFF PARTICIPANT: David Gula, Principal Planner*

WILMAPCO will work with DelDOT in partnership with DTC, the City of Newark, New Castle County, Norfolk Southern, Amtrak and the University of Delaware to use the TIGER IV grants funds to: 1) Complete the design for NRTC, creating the optimal solution for passenger and freight train operations at the existing Newark Train Station, and while keeping in context with the 272-acre UD STAR Campus; 2) Complete the engineering to 100%; and 3) Construct the NRTC while allowing for continuous passenger and freight operations at the existing facility. WILMAPCO is the Grant co-applicant and DelDOT is the co-applicant and Project Manager for the construction. The team of Whitman, Requardt and Associates and WSP has been retained as the consultant for the project. They will

work with DeIDOT and WILMAPCO to complete the design, complete the engineering to 100% and manage the construction to project completion. They will also assist in coordinating with the project stakeholders and developing the stakeholder MOAs. This project is scheduled for completion in December 2025. The budget for the project was \$59,900,000 and is derived from the TIGER IV Planning Grant (\$10,000,000), federal formula funds (\$10,000,000) and the local matching funds (\$39,900,000).

#### 4. City of Newark Transportation Improvement District (TID) Planning

*WILMAPCO STAFF PARTICIPANT: Heather Dunigan, Principal Planner*

Staff will partner with the City of Newark, DeIDOT and other stakeholders to monitor the TID that includes a land use and transportation plan, a set of buildable transportation projects, a fee formula to subsidize the improvements, and a monitoring program to track the need for the projects.

#### 25.13.04 – Centreville Village Plan

*WILMAPCO STAFF PARTICIPANT: Heather Dunigan, Principal Planner*

Staff will work with the Centreville Civic Association, DeIDOT and New Castle County to assist with implementation of the Centreville Village Plan. Staff will also complete ongoing evaluation of the effectiveness of the Plan, as outlined in the TCSP grant.

#### 25.13.05 – East Coast Greenway

*WILMAPCO STAFF PARTICIPANT: Heather Dunigan, Principal Planner*

Staff will work with the Nonmotorized Transportation Working Group to coordinate greenway planning efforts between Delaware and Maryland and assist with implementation of the East Coast Greenway route. Staff provides guidance regarding trail designation through our membership on the East Coast Greenway Alliance Greenway Committee.

#### 25.13.06 – New Castle County

##### 1. SR 141 Corridor 20 Year Transportation Plan & TOD Analysis

*WILMAPCO STAFF PARTICIPANT: Daniel Blevins, Principal Planner, David Gula, Principal Planner*

Staff worked with the County and its planning partners to create a 20-year land use plan based on existing and future land use development within the corridor. The first phase of this project was completed in FY 2017. Staff will be involved in future phases when requested by planning partners.

##### 2. Glasgow Avenue Main Street Study

*WILMAPCO STAFF PARTICIPANT: David Gula, Principal Planner, Daniel Blevins, Principal Planner*

This was a comprehensive study to improve the appearance and functionality along Glasgow Avenue that will encourage more non-motorized trips and better connectivity. WILMAPCO will work with NCC, DeIDOT, and area stakeholders on implementation efforts.

##### 3. Red Clay Valley Scenic Byway – Design Standards Overlay District

*WILMAPCO STAFF PARTICIPANT: Heather Dunigan, Principal Planner*

Staff worked with the County and its planning partners to create a scenic corridor zoning overlay and design standards, which was completed in 2016. Staff will assist New Castle County and the Red Clay Valley Scenic Byway as they work to implement the standards and the byway's Corridor Management Plan.

##### 4. New Castle County Greenway Plan

*WILMAPCO STAFF PARTICIPANT: Heather Dunigan, Principal Planner*

WILMAPCO, in partnership with DeIDOT, New Castle County, DE State Parks, and local government will coordinate to update and implement the New Castle County Greenway Plan for pedestrian and bicycle pathways throughout New Castle County. This plan complements the DeIDOT Bicycle Plan, which addresses on road connections, and the DeIDOT Pedestrian Plan, which is in development. The Plan identified existing and potential multi-use connections, emphasizing a network of side paths and greenways with proposed actions and policies to promote their implementation.

##### 5. North Claymont Area Master Plan – Monitoring Support

*WILMAPCO STAFF PARTICIPANT: Heather Dunigan, Principal Planner, David Gula, Principal Planner*

The North Claymont Area Master Plan was adopted in 2017 and included an implementation plan detailing additional actions to be undertaken by WILMAPCO and the planning partners. As outlined in the Plan's implementation section, staff will work with the partners—the Monitoring Committee-- to monitor plan implementation, facilitate planning for the development of a mixed-use, walkable transit hub, promote completion of the East Coast Greenway through the area, assist with land use coordination, assist with planning transit service changes, incorporate recommendations into the RTP, TIP and other documents, and promote completion of other recommendations as the area develops.

**\$17,000 is budgeted for consultant support.**

6. Route 9 Corridor Transportation and Land Use Master Plan Monitoring Support

*WILMAPCO STAFF PARTICIPANT: William Swiatek, Principal Planner, Jacob Thompson, Senior Planner*

In 2017 WILMAPCO developed a Master Plan for the Route 9 Corridor just south of Wilmington. Staff will continue to provide technical assistance to our local civic and agency partners to help realize the implementation of this plan, though efforts such as the Route 9 Redefined RAISE Grant. This includes organizing Route 9 Monitoring Committee and Subcommittee meetings, supporting the prioritization of local transportation projects, conducting outreach, measuring data trends, and providing general support as needed for the plan's implementation.

7. US 202 20 Year Land Use and Transportation Plan – Monitoring Support

*WILMAPCO STAFF PARTICIPANTS: Dan Blevins, Principal Planner and David Gula, Principal Planner*

The objective of the US 202 corridor Master Plan was to develop a corridor master plan to recommend physical improvements and governmental policies regarding transportation and land use. The result was to provide an environment to redevelop as a high-quality and attractive multi-modal corridor with provisions for future mixed-use land development with walkability, bikeability and place-making.

This project provides consultant support to monitor changing transportation and land use patterns along Concord Pike, between the city of Wilmington and the DE/PA State Line, to support implementation efforts of the Concord Pike Corridor Master Plan. Land development activity and trends will be profiled, along with average daily vehicle traffic, truck traffic, intersection level of service, crashes, bus ridership and service changes, the status of both transportation and land use projects called for in the Master Plan, and a profile of other relevant area planning and project efforts. The project, guided by input from the Monitoring Committee, will culminate in a published report. Participants include WILMAPCO, NCC Land Use, DeIDOT, DTC and a consultant.

**\$135,000 is budgeted for consultant support.**

8. Southern New Castle County Master Plan - Monitoring Support

*WILMAPCO STAFF PARTICIPANTS: Dan Blevins, Principal Planner and David Gula, Principal Planner*

The objective of the Southern New Castle County Master Plan was to develop a plan for the area south of the C&D Canal, which informs development and preservation decisions, recommended physical improvements and governmental policies regarding transportation and land use for Southern New Castle County, as implemented through the New Castle County Comprehensive Plan. The end result was to provide an environment to allow for growth and development with mixed-use land development with walkability, bikeability and place-making, while preserving natural and agricultural resources and assets.

This project provides consultant support to monitor changing transportation and land use patterns in Southern New Castle County and to support implementation efforts of the Master Plan. Land development activity and trends will be profiled, along with average daily vehicle traffic, truck traffic, intersection level of service, crashes, bus ridership and service changes, the status of both transportation and land use projects called for in the Master Plan, and a profile of other relevant area planning and project efforts. The project, guided by input from the Monitoring Committee, will culminate in a published report.

Participants include WILMAPCO, NCC Land Use, DeIDOT, DTC and a consultant.

**\$10,000 is budgeted for consultant support.**

9. Churchmans Crossing Plan Update - Monitoring Support

*WILMAPCO STAFF PARTICIPANT: Daniel Blevins, Principal Planner, David Gula, Principal Planner*

The initial Churchmans Crossing Study was a joint effort by DeIDOT, New Castle County and WILMAPCO to develop a land use/transportation vision for this important area. The land use and transportation recommendations provide a planning guide for this growth area over the next 25 years, including process and design guidelines. The study and its recommendations were adopted by the WILMAPCO Council into the 2020 Metropolitan Transportation Plan on September 11, 1997 and subsequently into the 2030 RTP. To account for the uncertainty as to when development will actually occur, the study provides performance indicators that DeIDOT, New Castle County and WILMAPCO have been monitoring closely to determine when and which projects should be implemented.

This project provides consultant support to monitor changing transportation and land use patterns in the Churchmans Crossing area. The project, guided by input from the Monitoring Committee, will culminate in a published report.

**\$165,000 is budgeted for consultant support.**

10. Governor Printz Boulevard Corridor Study – Monitoring Support

*WILMAPCO STAFF PARTICIPANT: Heather Dunigan, Principal Planner*

The study identified and assessed the feasibility of multimodal transportation projects to accommodate current and future transportation and land use needs, including roadway, transit, and nonmotorized travel including the East Coast Greenway. Staff will work with a Monitoring Committee to track existing conditions and further assess

multimodal improvements recommended in the Study.  
**\$17,000 is budgeted for consultant support.**

#### 11. New Castle County Bicycle Plan

*WILMAPCO STAFF PARTICIPANT: Heather Dunigan, Principal Planner*

WILMAPCO, New Castle County, municipalities and other stakeholders developed an accompanying New Castle County Bicycle Plan to support implementation of the 2018 Blueprint for a Bicycle-Friendly Delaware. WILMAPCO will monitor existing conditions and proposed projects from other local, county, regional and state plans and work with agencies, local governments and stakeholders to support the Plan's implementation and periodically update the recommendations.

#### 12. Claymont Area Master Plan

*WILMAPCO STAFF PARTICIPANT: Heather Dunigan, Principal Planner and David Gula, Principal Planner*

This project will update and enhance the 2004 Claymont Community Redevelopment Plan, which was conducted by the County and the community for the purpose of establishing a Hometown Overlay District. While the 2004 Claymont Community Redevelopment Plan has served the area for 18 years, there have been significant changes in New Castle County in terms of jobs, demographics, as well as development pattern and trends. Updating the plan to accommodate for these changes while incorporating land use and transportation innovations will further encourage enhancement of the built environment and supporting infrastructure in a holistic manner that respects the unique character of this area. In FY 2025, the Planning Partners will complete the Plan's development and establish a monitoring process.

#### **25.13.07 – Delaware City Transportation Plan**

*WILMAPCO STAFF PARTICIPANT: Heather Dunigan, Principal Planner, William Swiatek, Principal Planner*

The Plan identified and made recommendations to address the community's transportation concerns and recommended enhancements to the transportation system. WILMAPCO will continue to coordinate with DeIDOT, Delaware City and DTC to support its implementation.

#### **25.13.08– Delaware Department of Transportation and Delaware Transit Corporation**

##### 1.Route 40 Corridor Improvements

*WILMAPCO STAFF PARTICIPANT: Daniel Blevins, Principal Planner, David Gula, Principal Planner*

The Route 40 Corridor Improvements Project was initiated by DeIDOT in partnership with New Castle County and WILMAPCO in September 1998. The Route 40 Corridor 20-Year Transportation Plan was completed on June 19, 2000, and was adopted by the Steering Committee. The final step of the project, now underway, is the implementation of the Plan recommendations. As part of this step a Corridor Monitoring Committee was created in order to assure that all projects in the Plan are implemented as conditions dictate – neither prior to the anticipated need, nor subject to unnecessary delay after need is identified. Staff is participating as a member of the Committee and providing assistance to the effort. **\$35,000 is budgeted for consultant support.**

##### 2.Tyler McConnell Bridge

*WILMAPCO STAFF PARTICIPANT: Daniel Blevins, Principal Planner and David Gula, Principal Planner*

This effort will support staff participation in the Tyler McConnell Bridge working group committee and provide technical and coordinating assistance as needed.

##### 3.Route 301

*WILMAPCO STAFF PARTICIPANT: Daniel Blevins, Principal Planner*

The initial Greater Route 301 MIS was a joint effort by DeIDOT, New Castle County and WILMAPCO to reach a conclusion on a locally preferred alternative package of investment endorsed by New Castle County, municipalities and the State of Delaware through the WILMAPCO Council. WILMAPCO staff is participating in the implementation of these projects including the monitoring of traffic conditions as part of the US 301 Spur Trigger Analysis.

##### 4.DTC Business Plan / Long-Range Plan

*WILMAPCO STAFF PARTICIPANT: David Gula, Principal Planner*

This effort will support staff participation in the DTC Business Plan / Long-Range Plan implementation and provide technical and coordinating assistance as needed.

##### 5.Claymont Transportation Plan

*WILMAPCO STAFF PARTICIPANT: David Gula, Principal Planner*

Staff will work with DeIDOT, New Castle County and community groups to develop a transportation plan for the area and provide technical assistance as needed.

#### 6. Amtrak Northeast Corridor Studies

*WILMAPCO STAFF PARTICIPANT: David Gula, Principal Planner, Daniel Blevins, Principal Planner, Heather Dunigan, Principal Planner*

WILMAPCO Staff will work with DelDOT, Norfolk Southern Railroad, Amtrak FRA, and Maryland DOT, to determine the feasibility and cost estimate to develop an infrastructure solution (additional track, switches, etc.) on the Amtrak Northeast Corridor that will allow 25/7 access for freight movements between Perryville, Maryland and Newark, Delaware. This work will be coordinated with the NEC Future Tier I and Tier II Studies that are being carried forward by the FRA. The Perryville-Newark Link has been identified in the Delaware and WILMAPCO freight plans, as well as by the NS Delmarva Business Unit, as a very important freight rail project for the State and region. The additional track capacity between Perryville and Newark will facilitate the long-term expansion of transit service (MARC) to areas north of Perryville, including possible new service to Delaware. The *MARC Growth & Investment Plan* cites the need for expanded transit to: 1) provide fast, reliable transportation in key corridors and serve BRAC-related travel markets; 2) reduce the need to expand highways; 3) offer efficient, environmentally sustainable transportation choices to commuters and regional travelers; 4) encourage efficient regional land use and transit-oriented development, and 5) support more efficient freight rail movement.

#### 7. Claymont Regional Transportation Center

*WILMAPCO STAFF PARTICIPANT: David Gula, Principal Planner*

WILMAPCO Staff will work DTC and their consultant as they complete NEPA work, develop the TIGER Agreement, complete station design, and coordinated with TOD development for this station improvement project. Staff will work with FTA to develop performance measures for the TIGER Agreement document.

### **25.13.09 – MDOT, Cecil County Office of Planning and Zoning, Parks and Recreation, and Cecil County Department of Aging**

#### 1. Cecil County Transit Study

*WILMAPCO STAFF PARTICIPANT: Heather Dunigan, Principal Planner, David Gula, Principal Planner*

Staff will assist with and monitor the implementation of the recommendations from the transit study conducted by the Cecil County Department of Aging.

#### 2. Incorporate the Lower Susquehanna Heritage Greenways Management Plan into Cecil County Mobility Friendly Design Standards in Perryville and Port Deposit, Maryland

*WILMAPCO STAFF PARTICIPANT: Heather Dunigan, Principal Planner, David Gula, Principal Planner*

Staff will participate in the Mobility and Transit Friendly Design Standards Studies and provide technical assistance as needed. Staff will provide assistance as requested to Cecil County and their consultant to support the work begun in FY 2002 with North East, to develop and adopt mobility friendly design standards.

#### 3. Transit Service, Between Harford and Cecil Counties—*Filling the Gap*

*WILMAPCO STAFF PARTICIPANT: David Gula, Principal Planner, Heather Dunigan, Principal Planner*

Staff will work with the Maryland Department of Transportation and Maryland Transit Administration in collaboration with Harford and Cecil counties, BMC, and DTC in seeking short-term means to improve connections between existing transit services in Harford and Cecil Counties; thereby “filling the gap” for transit riders traversing the Harford and Cecil County lines. The objectives of this effort are to examine near-term improvements that: 1) link the existing local transit service offered in Harford and Cecil Counties, 2) serve longer regional transit needs to Baltimore and Wilmington through extension of commuter bus service or better interface with existing commuter bus and rail service, and 3) improve communication regarding availability of local and regional transit services and how such linkages between the services can be made.

#### 4. Cecil County Bicycle Plan

*WILMAPCO STAFF PARTICIPANT: David Gula, Principal Planner*

The Cecil County Bicycle Plan was developed in coordination with Cecil County, the Maryland Department of Transportation (MDOT), municipalities, cyclists and other stakeholders to establish recommendations for improved access and comfort of bicycling. The Plan proposed bicycle facilities for both unincorporated and incorporated areas of Cecil County, while integrating the bicycle recommendations for Elkton and Perryville. WILMAPCO staff will coordinate with staff from Cecil County Planning and Zoning and incorporated towns to implement the recommendations.

#### 5. Cecil County Design Guidelines

*WILMAPCO STAFF PARTICIPANT: Heather Dunigan, Principal Planner*

Staff will develop best practices design guidelines that would reconcile good new urbanist, neo-traditional, transit neighborhood design and complete street design elements with good environmental design elements.



6. Cecil County Route 40 Program Development Support

*WILMAPCO STAFF PARTICIPANT: Dan Blevins, Principal Planner*

Staff will develop annual report monitoring transportation and land use changes to the US 40 corridor in Cecil County. This report will establish baseline and future traffic and land use projections and monitor on ongoing basis. In addition, the report will assess the conditions which may trigger the need to implement projects that were evaluated and identified in the 2007 Roadway Improvement Strategic Plan for Cecil County.

7. MARC Commuter Rail Service Extension Ridership Analysis

*WILMAPCO STAFF PARTICIPANT: David Gula, Principal Planner*

Staff will provide assistance to update the commuter ridership model to show past trends in ridership, current ridership, and projected ridership and will take into account county to county workflow and rail use potential that may be affected by lack of parking. The project will also analyze the full market, both north and south bound, and will be expanded to assume Baltimore and Philadelphia as endpoints.

**25.13.10– Town of Chesapeake City**

1. Town of Chesapeake City Comprehensive Plan Update

*WILMAPCO STAFF PARTICIPANT: Heather Dunigan, Principal Planner, William Swiatek, Principal Planner*

Staff will work with the Town of Chesapeake City in implementing their Comprehensive Plan.

2. Town of Chesapeake City Zoning Ordinance

*WILMAPCO STAFF PARTICIPANT: Heather Dunigan, Principal Planner, William Swiatek, Principal Planner*

Staff will work with the Town as they implement the Town of Chesapeake City Zoning Ordinance and Zoning Map so that it is in alignment with the town's Comprehensive Plan and WILMAPCO's Long Range Regional Transportation Plan.

3. Town of Chesapeake City Parking Plan

*WILMAPCO STAFF PARTICIPANT: Heather Dunigan, Principal Planner*

Staff will work with the Town of Chesapeake City in implementing their Parking Plan recommendations.

4. Town of Chesapeake City Subdivision Regulations

*WILMAPCO STAFF PARTICIPANT: Heather Dunigan, Principal Planner, William Swiatek, Principal Planner*

Staff will work with the Town as they implement the Town of Chesapeake City Subdivision Regulations so that it is in alignment with the town's Comprehensive Plan and WILMAPCO's Long Range Regional Transportation Plan.

5. Walking and Biking Plan & Implementation Program

*WILMAPCO STAFF PARTICIPANT: Heather Dunigan, Principal Planner, William Swiatek, Principal Planner*

WILMAPCO will assist the Town with development of funding applications for the Transportation Alternatives Program or other sources of implementing funds to complete identified improvements from the Walkable Community Workshop and town plans.

**25.13.11– Town of Elkton Planning**

1. Town of Elkton TOD Feasibility Study

*WILMAPCO STAFF PARTICIPANT: David Gula, Principal Planner, William Swiatek, Principal Planner*

Staff will work with the Town of Elkton in implementing recommendations from the TOD Feasibility Study.

2. Town of Elkton Bicycle Plan

*WILMAPCO STAFF PARTICIPANT: David Gula, Principal Planner, William Swiatek, Principal Planner*

Staff will work with the Town of Elkton in implementing recommendations from the bicycle plan.

3. Town of Elkton Zoning Ordinance and Subdivision Update

*WILMAPCO STAFF PARTICIPANT: David Gula, Principal Planner, William Swiatek, Principal Planner*

Staff will work with the Town as they implement the zoning ordinances and subdivision regulations to be consistent with Elkton's Comprehensive Plan and WILMAPCO's Regional Transportation Plan (RTP).

4. Elkton Pedestrian Plan

*WILMAPCO STAFF PARTICIPANT: Jacob Thompson, Senior Transportation Planner & William Swiatek, Principal Planner*

Staff will work with the Town of Elkton in implementing recommendations from the pedestrian plan.

**25.13.12 – City of Wilmington**

1. Wilmington Initiatives Implementation

*WILMAPCO STAFF PARTICIPANT: David Gula, Principal Planner, Tigist Zegeye, Executive Director*

*The Wilmington Land Use and Development Capacity Assessment* and *The Downtown Circulation Study* were both adopted by the WILMAPCO Council on September 11, 1997. The Downtown Circulation Study is updated. Results from these studies call for major improvements in the City of Wilmington encompassing several design project development efforts, such as:

- Market Street Retail Corridor Improvement
- Delaware Avenue/Washington Street Gateway Improvements
- King and Orange Streets Transit Corridor Improvements
- Transportation Center Phase III Transit Hub (Porter Site)
- Downtown 4<sup>th</sup> Street Improvements Project
- Wilmington Signalization Project
- Northeast Boulevard Streetscape Improvements
- Two-Way King Street/Fletcher Brown Park Study

Staff is working with the City of Wilmington, DeIDOT, and DTC to design and implement the above projects.

2. Southbridge Transportation Action Plan (Update to the 2008 Southbridge Circulation Study) Monitoring  
*WILMAPCO STAFF PARTICIPANT: William Swiatek, Principal Planner, Jacob Thompson, Senior Planner.*

The Southbridge Transportation Action Plan updated the 2008 Southbridge Circulation Plan. It addressed traffic and circulation in Southbridge for the purpose of reducing, slowing and restricting traffic, as well as diverting truck traffic onto Christina Avenue. As part of the study, a road diet, D Street sweep removal, truck reduction options, potential traffic impacts associated with the South Market Street Master Plan, along with measures recommended in the Southbridge Neighborhood Action Plan were examined. The study proceeded with collaboration from the South Wilmington Planning Network, the Southbridge Civic Association, and the Southbridge Community Development Corporation. This task will provide monitoring support through the South Wilmington Planning Network to guide state and municipal infrastructure project implementation.

3. Downtown Wilmington Circulation Study

*WILMAPCO STAFF: David Gula, Principal Planner*

Staff will be working with the City of Wilmington, DeIDOT, and DTC to design and implement recommendations from the circulation study.

4. City of Wilmington updates to Subdivision Regulations

*WILMAPCO STAFF PARTICIPANT: Tigist Zegeye, Executive Director, William Swiatek, Principal Planner*

Staff will work with the City as they implement the subdivision regulations to be consistent with their Comprehensive Plans and WILMAPCO's Long Range Regional Transportation Plan (RTP).

5. Delaware Avenue/11<sup>th</sup>/12<sup>th</sup> Streets Curve Study

*WILMAPCO STAFF PARTICIPANT: Tigist Zegeye, Executive Director, David Gula, Principal Planner*

The Downtown Circulation Study completed by WILMAPCO in 2010, identified the Delaware Avenue/11th/12th Streets as an area for further study. The Delaware Avenue/11th/12th Streets Curve Study developed recommendations to improve road geometry of this area and include streetscape, pedestrian, and bicycle accommodations along the corridor. The analysis identified recommendations for reconstructing this corridor. WILMAPCO Staff will work with the Wilmington Departments of Planning and Public Works, and the Wilmington Initiatives Partnership (DeIDOT, DTC, WILMAPCO, and the City of Wilmington), and affected community representatives.

6. Wilmington Bicycle Plan

*WILMAPCO STAFF PARTICIPANT: David Gula, Principal Planner, Jacob Thompson, Senior Transportation Planner*

WILMAPCO staff will coordinate with staff from the City of Wilmington's Mayor's Office Planning & Urban Design and Public Works Department on the City's Advisory Committee that will work to implement the recommendations of the Bike Plan.

7. 12<sup>th</sup> Street Connector Alignment Study

*WILMAPCO STAFF PARTICIPANT: Tigist Zegeye, Executive Director, David Gula, Principal Planner*

The purpose of this project was to evaluate and recommend the optimal location and design for the proposed 12<sup>th</sup> Street Connector. This roadway will provide a more direct route to downtown Wilmington, and redirect current traffic from Price's Run, Riverside and East Side neighborhoods. The concept will generate economic development opportunities by opening new land in the vicinity of and along the Brandywine Creek while providing the necessary multimodal improvements to reduce neighborhood congestion, improve connections to the creek and make the area more bicycle and pedestrian friendly. This study was conducted in partnership with the Wilmington Initiative partners; DeIDOT, DTC and City of Wilmington departments. Staff will work with the City as they implement the plan elements.

8. East 7<sup>th</sup> Street Peninsula Roadway Improvements/ Development Study

*WILMAPCO STAFF PARTICIPANT: Tigist Zegeye, Executive Director, David Gula, Principal Planner*

The goal of the project was to prepare a master plan which identifies and prioritizes the implementation of necessary roadway and utility improvements. The plan evaluates and recommends land use and development potential that will attract suitable public/private investment opportunities to facilitate future economic development on the East 7<sup>th</sup> Street Peninsula. This study was conducted in partnership with the Wilmington Initiative partners; DeIDOT, DTC and City of Wilmington departments. Staff will work with the City as they implement the plan elements.

9. Safety & Capacity Improvement Study for 5-Point Intersection

*WILMAPCO STAFF PARTICIPANT: Tigist Zegeye, Executive Director, David Gula, Principal Planner*

The goal of the project was to evaluate and recommend roadway and infrastructure improvements to address operational and safety issues in the vicinity of Maryland Avenue, S. Madison Street, Martin Luther King Jr. Boulevard and West Street to improve the efficiency and effectiveness of the transportation grid which serves downtown Wilmington, the Christina Riverfront, local neighborhoods and regional interests. The study addressed necessary safety and capacity improvements, optimized circulation and access, and planned multimodal connectivity at and around the 5-Point Intersection. This study was conducted in partnership with the Wilmington Initiative partners; DeIDOT, DTC and City of Wilmington departments. Staff will work with the City as they implement the plan elements.

10. Wilmington Resilience Plan

*WILMAPCO STAFF PARTICIPANT: David Gula, Principal Planner and William Swiatek, Principal Planner*

WILMAPCO supported the City of Wilmington's efforts to create a Resiliency Plan. The plan identifies actions Wilmington can reduce its carbon footprint and better prepare for climate change. These include advancing cleaner forms of transportation and planning for sea level rise impacts. Staff will work with the City as they implement the plan elements.

11. Union St Reconfiguration and Streetscapes Improvement Study

*WILMAPCO STAFF PARTICIPANT: David Gula, Principal Planner*

The Union Street Rapid Configuration Project resulted in the reduction of lanes between SR 52 (Pennsylvania Avenue) and Sycamore Street from 3 to 2, while reconfiguring existing left-side parallel parking to back-in angle parking with an adjacent bicycle lane. This project was intended as an interim step to the final design as it was mainly a re-stripping effort which limited changes to the left travel and curb lanes, with limited curb ramp and crosswalk additions.

12. I-95 Cap Feasibility Study Monitoring Support

*WILMAPCO STAFF PARTICIPANT: Tigist Zegeye, Executive Director, David Gula, Principal Planner*

When I-95 was constructed through Wilmington in the mid-1960s it created a barrier between the downtown and the western part of the City. Nationwide, many cities are creating caps over highways and utilizing this found space for parks and recreational purposes, as well as other creative developments. WILMAPCO worked in partnership with DeIDOT and the City of Wilmington to explore the feasibility of creating a "cap" over the section(s) of I-95 that are below grade within Wilmington between Delaware Avenue and 6<sup>th</sup> Street. Public outreach was a crucial element as there is already a grassroots movement in Wilmington to convert vehicular bridges over I-95 into pedestrian spaces.

The study resulted in a preferred configuration that is optimal to support future land use and transportation needs. The new concept is a result of a community driven process to develop a long-term vision for the Union Street corridor. The project team evaluated the existing design and operation and collaborated with the community to create a configuration that will balance the flow of vehicular traffic with the need for a pedestrian and bicycle friendly corridor that prioritizes wider sidewalks and traffic calming measures, while also serving transit operations. The report includes the preferred concept with cost estimates and includes a Planning and Environmental Linkage (PEL) Study that contributes to the necessary NEPA work and enables the project to be eligible for state and federal funds.

Staff will monitor the study results and provide technical guidance and support to partners as concepts are explored to provide new connections between neighborhoods that were divided when the highway was constructed.

**25.13.13 – Town of Perryville**

1. Town of Perryville Greenway Plan

*WILMAPCO STAFF PARTICIPANT: Heather Dunigan, Principal Planner*

WILMAPCO and the Town of Perryville have developed a master plan for pedestrian and bicycle facilities and policies that were completed in FY 2012. Staff will work with the town and the Perryville Greenway Committee as they implement the recommendations.

2. Town of Perryville Transit Oriented Development (TOD)

*WILMAPCO STAFF PARTICIPANT: Heather Dunigan, Principal Planner, David Gula, Principal Planner*

The Town of Perryville TOD study examined opportunities to enhance the existing MARC commuter service and surrounding land uses and was completed in FY 2012. Staff will work with the Town as they implement the land use and transportation recommendations.

#### **25.13.14 – Town of North East**

##### **1. Transportation and Land Use Maps Update**

*WILMAPCO STAFF PARTICIPANT: Heather Dunigan, Principal Planner, William Swiatek, Principal Planner*

The Town of North East completed revisions to the Transportation and Land Use Maps. Staff will work with the town as they implement roads, trails, bicycle paths, sidewalks and identify the course of planning for North East.

##### **2. Town of North East Transit Oriented Development**

*WILMAPCO STAFF PARTICIPANT: Heather Dunigan, Principal Planner, William Swiatek, Principal Planner*

WILMAPCO and the Town of North East completed a Transit Oriented Development (TOD) Study Plan to identify opportunities and land areas within North East for future transit supportive development and transportation around existing and future transit. The Plan identified a potential location for a future train station and transit hub, and included recommendations for land use master planning, zoning and urban design to support new development that will be sensitive to the existing character and desired development patterns, and included implementation strategies, to provide a rail link to the Town of North East by examining existing and future demand on the land areas. They will also develop a transit-oriented plan for rail service, which would accommodate existing and future needs of the Town. The Study will include recommendations and choices of locations where a rail station is feasible, a plan to include suitable land uses associated with rail use and identify the impacts to the town in relationship to parking and street improvements. Participants include an Advisory Committee that included North East Planning Commission, The North East Mayor and Commissioner's Town Board, State Highway Administration, Chesapeake Bay Critical Area Commission, Maryland Department of Planning, Cecil County, North East Rail Service Committee (to be established), Homeowners Associations, and interested citizens.

##### **3. Town of North East Subdivision Regulations and Road Code Revisions**

*WILMAPCO STAFF PARTICIPANT: Heather Dunigan, Principal Planner, William Swiatek, Principal Planner*

The Town of North East will complete revisions to Town of North East Subdivision Regulations and Road Code so that it is in alignment with the town's Comprehensive Plan and WILMAPCO's Regional Transportation Plan.

#### **25.13.15 - Coordination with the Town of Port Deposit**

##### **Transit Feasibility Study**

*WILMAPCO STAFF PARTICIPANT: Heather Dunigan, Principal Planner, William Swiatek, Principal Planner*

The Port Deposit Transit Feasibility Study was completed in FY 2013 and assessed potential routes, ridership and cost for fixed route public transit as well as alternative measures to improve mobility within the town and promote access to areas outside the town. Staff will work with Port Deposit and Cecil County to promote implementation of improvements and services.

#### **25.13.16- Coordination with the Village of Marshallton**

##### **Village of Marshallton Circulation Study**

*WILMAPCO STAFF PARTICIPANT: William Swiatek, Principal Planner*

In coordination with the Village of Marshallton, DelDOT and New Castle County the Marshallton Circulation Study was completed in 2014. The study made recommendations to address heavy vehicle volumes and speeding traffic on Old Capitol Trail, along with improving the village's multimodal transportation network. Staff will support the implementation of these recommendations as needed.

#### **25.13.17– Coordination with the Village of Ardentown**

##### **Ardentown Paths Plan**

*WILMAPCO STAFF PARTICIPANT: Jacob Thompson, Senior Planner & William Swiatek, Principal Planner*

The Ardentown Paths Plan identified necessary improvements to the historic network of pedestrian paths in Ardentown to preserve its natural and cultural history and to support making the village a more walkable and bikeable community. Staff will support the Ardentown Planning Committee, DelDOT, New Castle County, DNREC and others. to realize the implementation of this plan.

#### **25.13.18 – Coordination with the Ardens**

##### **Connecting with the Ardens: A Transportation Plan Monitoring**

*ADMINISTRATOR: William Swiatek, Principal Planner. Jacob Thompson, Senior Transportation Planner*

The Ardens Transportation Plan addressed transportation issues common among the villages of Arden, Ardentown, and Ardencroft. Calming traffic and increasing access and safety for active transportation were central to the plan. The plan was developed in partnership with the three villages through a robust public participation process inclusive

of other relevant agencies and stakeholders. This task will provide monitoring support to guide state and municipal infrastructure project implementation. **\$25,000 is budgeted for consultant support.**

**25.13.19- Coordination with the Town of Newport**

Newport Transportation Plan - Monitoring Support

*WILMAPCO STAFF PARTICIPANT: David Gula, Principal Planner and Jake Thompson, Senior Transportation Planner*

The Newport Transportation Plan examined the impacts that new development in Newport, and in the surrounding area, will have on the Town, and identified multimodal improvements to the Town's transportation infrastructure to create a walkable, bikeable and transit-friendly town. The study area includes the Town of Newport and the surrounding area in unincorporated New Castle County.

This project provides consultant support to monitor changing transportation and land use patterns in the study area for the Newport Transportation Plan, to support implementation efforts of the Plan. Land development activity and trends will be profiled, along with average daily vehicle traffic, truck traffic, intersection level of service, crashes, bus ridership and service changes, the status of both transportation and land use projects called for in the Plan, and a profile of other relevant area planning and project efforts. The consultant team will also develop an updated cost estimate for the proposed Newport Train Station to reflect recent rail project cost trends. The project, guided by input from the Monitoring Committee, will culminate in a published report. Participants include WILMAPCO, NCC Land Use, DeIDOT, DTC and a consultant.

**\$20,000 is budgeted for consultant support.**

**25.13.19- Coordination with the Town of Charlestown**

Charlestown Walkable Community Workshop and Planning Study

*WILMAPCO STAFF PARTICIPANT: Heather Dunigan, Principal Planner, Jacob Thompson, Senior Planner.*

In 2022, WILMAPCO and Charlestown held a Walkable Community Workshop. The primary goal was to improve safety of the pedestrian route from the historic town core up to the school. The existing sidewalks are narrow and crumbling, obstructed by a parking area, and subject to flooding from multiple sources. Replacement of the pedestrian bridge across Red Rum Creek is necessary to improve safety and ADA compliance. Future plans along this route could include pedestrian-level street lighting, marked crosswalks and crossing signs, relocating power lines underground, realignment at 343 Market to separate the road and sidewalk, and a potential roundabout at Bladen and Market Street. The result would be an active, walkable historic town core that would attract heritage tourists and increase business activity. Staff will support the Town of Charlestown; Colonial Charlestown, Inc.; Delmarva Power, Inc.; AECOM, Town Engineer; the Maryland State Highway Administration; and the Maryland Department of Transportation.

**25.13.20 – Other**

*ADMINISTRATOR: Tigist Zegeye, Executive Director, and Staff*

Other sub-regional study implementation tasks as identified.

OUTCOME AND FINAL PRODUCTS: Implemented plans and projects that will help to achieve the goals of WILMAPCO's 2050 RTP

SCHEDULE: FY 2025

TASK TYPE: Recurring

PUBLIC PARTICIPATION: Member agencies are responsible for implementing public participation strategies for their projects. WILMAPCO will assist when possible by placing notices in our newsletter, e-news and other mailings.

BENEFIT: Assurance that plans and projects are implemented in such a manner as to conform to the goals and strategies of WILMAPCO's 2050 RTP.

PARTICIPANTS: WILMAPCO Staff, Member Agencies, and the Public

TOTAL COSTS:

<b>Resource Allocation</b>	WILMAPCO	\$194,995
	CONSULTANT	\$424,000
	<b>TOTAL</b>	<b>\$618,995</b>
<b>Cost Allocation</b>		
<b>Cost Allocation</b>		<b>Total Cash Budget</b>
FHWA DE		\$311,386
FTA DE		\$162,124
FHWA MD		\$15,828
FTA MD		\$5,858
Delaware		\$111,181
Maryland		\$2,711
New Castle County		\$5,236
Cecil County		\$2,711
City of Wilmington		\$,1961
TOTALS		\$618,995

## **V PRIOR YEARS' WORK TASKS CARRIED OVER**

**THE FOLLOWINGPAGE INTENTIONALLY LEFT BLANK**

Information to be inserted upon program amendment.

## VI FY 2025 UPWP COST ALLOCATION BY FUNDING SOURCE

<b>FY 2025 WORK TASKS - WILMAPCO</b>										
TASK #	FEDERAL				STATE		LOCAL			FY2025 PROGRAM
	FHWA	FTA	FHWA	FTA	DELAWARE	MARYLAND	NEW CASTLE COUNTY	CECIL COUNTY	CITY OF WILMINGTON	
	DELAWARE		MARYLAND							
<b>TOTAL TASK COST</b>										
Administration										
MPO 25.01	\$186,359	\$97,028	\$9,473	\$3,506	\$66,540	\$1,622	\$3,134	\$1,622	\$1,173	\$370,458
Unified Planning Work Program (UPWP)										
MPO 25.02	\$57,984	\$30,190	\$2,947	\$1,091	\$20,703	\$505	\$975	\$505	\$365	\$115,265
Public Outreach & Education										
MPO 25.03	\$105,743	\$55,055	\$5,375	\$1,989	\$37,756	\$921	\$1,778	\$921	\$666	\$210,203
Data Collection, Management & Distribution										
MPO 25.04	\$74,001	\$38,529	\$3,762	\$1,392	\$26,422	\$644	\$1,244	\$644	\$466	\$147,105
Regional Planning & Technical Analysis										
MPO 25.05	\$140,548	\$73,177	\$7,144	\$2,644	\$50,183	\$1,224	\$2,363	\$1,224	\$885	\$279,392
Air Quality Coordination and Analysis										
MPO 25.06	\$27,370	\$14,250	\$1,391	\$515	\$9,773	\$238	\$460	\$238	\$172	\$54,408
New Federal Regulation Compliance										
MPO 25.07	\$34,212	\$17,813	\$1,739	\$644	\$12,216	\$298	\$575	\$298	\$215	\$68,010
Goods Movement Plan Implementation										
MPO 25.08	\$98,951	\$51,519	\$5,030	\$1,862	\$35,331	\$861	\$1,664	\$861	\$623	\$196,702
Regional Coordination										
MPO 25.09	\$65,952	\$34,338	\$3,352	\$1,241	\$23,548	\$574	\$1,109	\$574	\$415	\$131,104
RTP Implementation										
MPO 25.10	\$138,798	\$72,265	\$7,055	\$2,611	\$49,558	\$1,208	\$2,334	\$1,208	\$874	\$275,912
Sub-regional Studies & Coordination										
MPO 25.11	\$461,661	\$240,365	\$23,467	\$8,685	\$164,837	\$4,019	\$7,763	\$4,019	\$2,907	\$917,721
Transportation Improvement Program										
MPO 25.12	\$40,695	\$21,188	\$2,069	\$766	\$14,530	\$354	\$684	\$354	\$256	\$80,897
Monitoring of Sub-regional Studies										
MPO 25.13	\$311,386	\$162,124	\$15,828	\$5,858	\$111,181	\$2,711	\$5,236	\$2,711	\$1,961	\$618,995
<b>TOTAL FY 2025 TASKS</b>										
	\$1,743,660	\$907,841	\$88,632	\$32,803	\$622,577	\$15,180	\$29,319	\$15,180	\$10,979	\$3,466,171
Vacation & Holiday	\$129,728	\$67,543	\$6,594	\$2,441	\$46,320	\$1,129	\$2,181	\$1,129	\$817	\$257,882
<b>Grand Total FY 2025 UPWP</b>										
	\$1,873,388	\$975,384	\$95,226	\$35,244	\$668,897	\$16,309	\$31,500	\$16,309	\$11,796	\$3,724,053



**THIS PAGE INTENTIONALLY LEFT BLANK**

VII COUNCIL RESOLUTION

## Wilmington Area Planning Council

The Tower at STAR Campus  
100 Discovery Blvd, Suite 800  
Newark DE 19713  
302-737-6205, Fax 302-286-7131  
Website: www.wilmapco.org

### RESOLUTION

**WILMAPCO Council:**

**John Sisson, Chair**  
*Delaware Transit Corporation  
Chief Executive Officer*

**Geoff Anderson**  
*Maryland Dept. of Transportation  
Chief, Office of Planning,  
Programming and Delivery*

**David L. Edgell**  
*Delaware Office of State Planning  
Coordination, Director*

**Danielle Homberger**  
*Cecil County Executive*

**Nicole Majeski**  
*Delaware Dept. of Transportation  
Secretary*

**Matthew Meyer**  
*New Castle County Executive*

**Michael S. Purzycki**  
*Mayor of Wilmington*

**Eric Scott Thompson**  
*Mayor of Elsmere*

**Vacant**  
*Cecil County Municipalities  
Representative*

**WILMAPCO Executive Director**  
*Tigist Zegeye*

**BY THE WILMINGTON AREA PLANNING COUNCIL  
ADOPTING THE STATE/LOCAL CASH COMMITMENT WHEN MATCHING  
WILMAPCO'S FEDERAL FUNDS FOR FY 2025  
UNIFIED PLANNING WORK PROGRAM**

**WHEREAS**, WILMAPCO receives federal funding from the Federal Highway Administration (FHWA) and Federal Transit Administration (FTA) to support transportation planning activities; and,

**WHEREAS**, all federal funds must be matched by twenty percent (20%) State/Local funds; and,

**WHEREAS**, federal regulations permit State/Local matching to be made either in cash or by way of "in-kind services", or soft match; and,

**WHEREAS**, WILMAPCO requires a certain amount of the matched funds to be made in cash in order to ensure that WILMAPCO's cash obligations may be met; and

**WHEREAS**, the agreed upon cash commitment have been \$16,309 from the State of Maryland, \$16,309 from Cecil County, \$668,897 from the State of Delaware, \$31,500 from New Castle County and \$11,796 from the City of Wilmington;

**NOW, THEREFORE, BE IT RESOLVED** that the WILMAPCO Council does hereby adopt the State/Local Cash Commitment when matching WILMAPCO's federal funding for fiscal year 2025 UPWP, as outlined above.

5/23/2024

Date: \_\_\_\_\_



John Sisson, Chairperson  
Wilmington Area Planning Council



*Partners with you in transportation planning*

# Wilmington Area Planning Council

The Tower at STAR Campus  
100 Discovery Blvd, Suite 800  
Newark DE 19713  
302-737-6205; Fax 302-286-7131  
Website: www.wilmapco.org

## RESOLUTION BY THE WILMINGTON AREA PLANNING COUNCIL ADOPTING THE FY 2025 UNIFIED PLANNING WORK PROGRAM

**WILMAPCO Council:**

**John Sisson, Chair**  
*Delaware Transit Corporation  
Chief Executive Officer*

**Geoff Anderson**  
*Maryland Dept. of Transportation  
Chief, Office of Planning,  
Programming and Delivery*

**David L. Edgell**  
*Delaware Office of State Planning  
Coordination, Director*

**Danielle Hornberger**  
*Cecil County Executive*

**Nicole Majeski**  
*Delaware Dept. of Transportation  
Secretary*

**Matthew Meyer**  
*New Castle County Executive*

**Michael S. Purzycki**  
*Mayor of Wilmington*

**Eric Scott Thompson**  
*Mayor of Elsmere*

**Vacant**  
*Cecil County Municipalities  
Representative*

**WILMAPCO Executive Director**  
*Tigist Zegeye*

**WHEREAS**, The Wilmington Area Planning Council (WILMAPCO), as designated by the Governors of the States of Delaware and Maryland, is the Metropolitan Planning Organization (MPO) for the Wilmington, Delaware Metropolitan Area; and,

**WHEREAS**, Federal regulations require the endorsement by the MPO of a Unified Planning Work Program (UPWP) which documents and describes metropolitan transportation planning and related metropolitan planning activities anticipated in the Metropolitan Area during the next fiscal year; and,

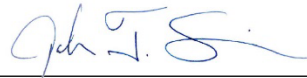
**WHEREAS**, such documentation serves to unify the various metropolitan transportation planning efforts within a comprehensive, continuing, and cooperative planning process; and,

**WHEREAS**, the draft WILMAPCO FY 2025 Unified Planning Work Program has undergone appropriate technical and public review;

**NOW, THEREFORE, BE IT RESOLVED** that the WILMAPCO Council does hereby adopt the Unified Planning Work Program for fiscal year 2025.

5/23/2024

Date:



John Sisson, Chairperson  
Wilmington Area Planning Council



*Partners with you in transportation planning*